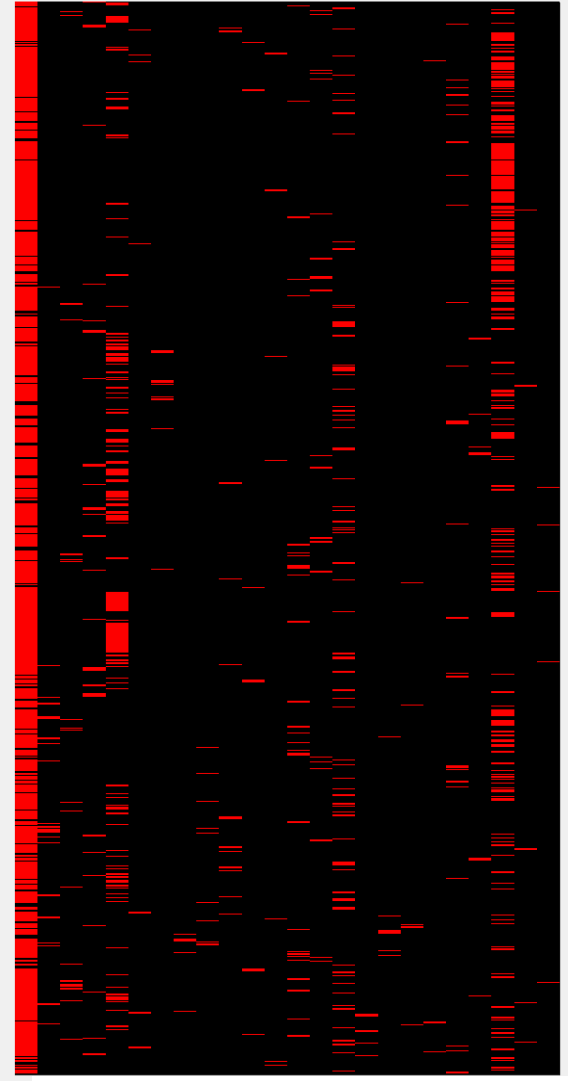
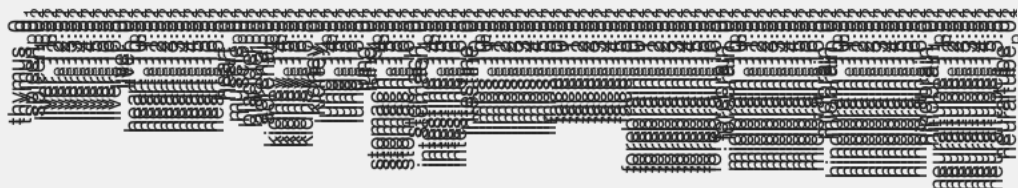
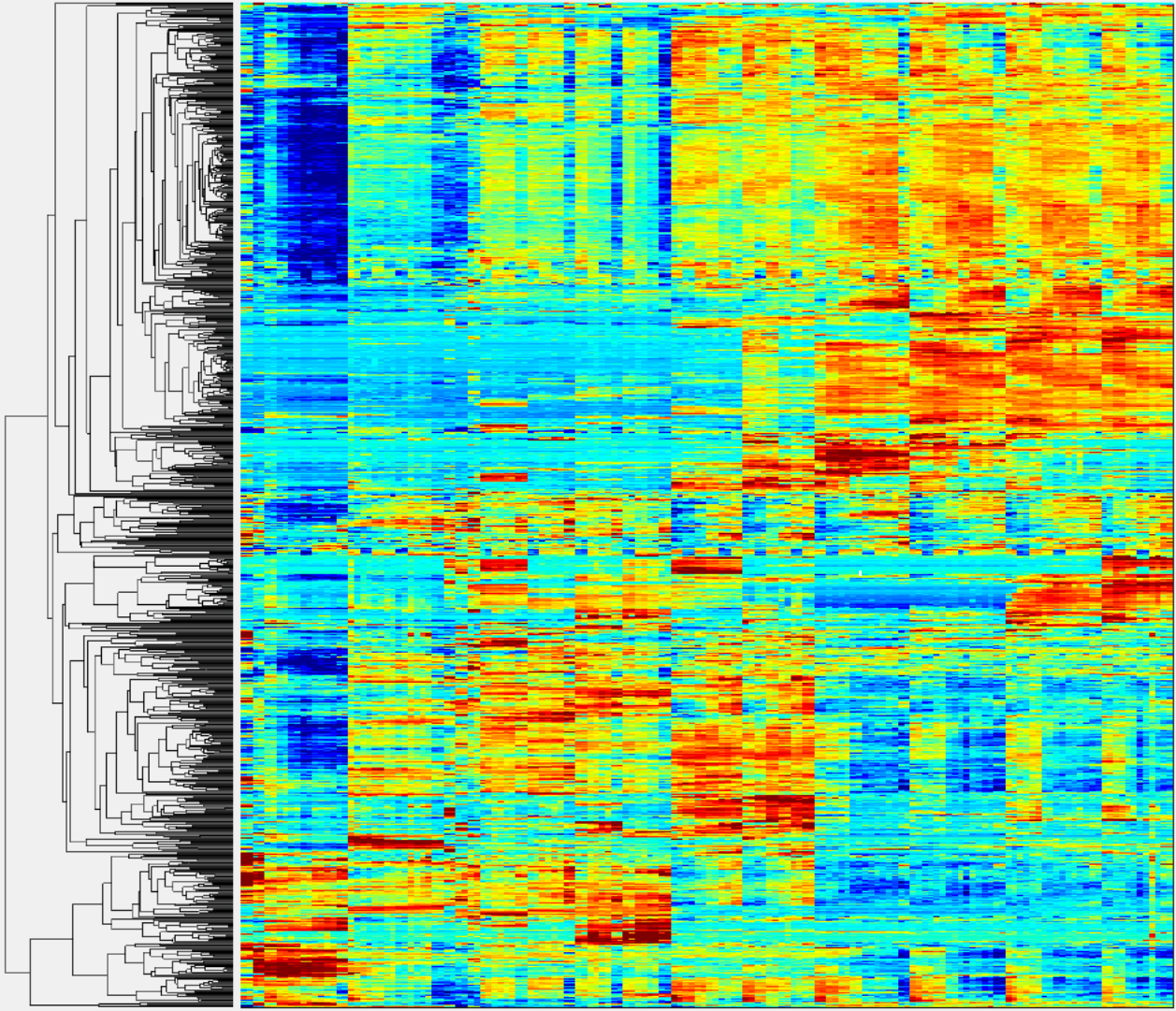


New Updates About Major Figures

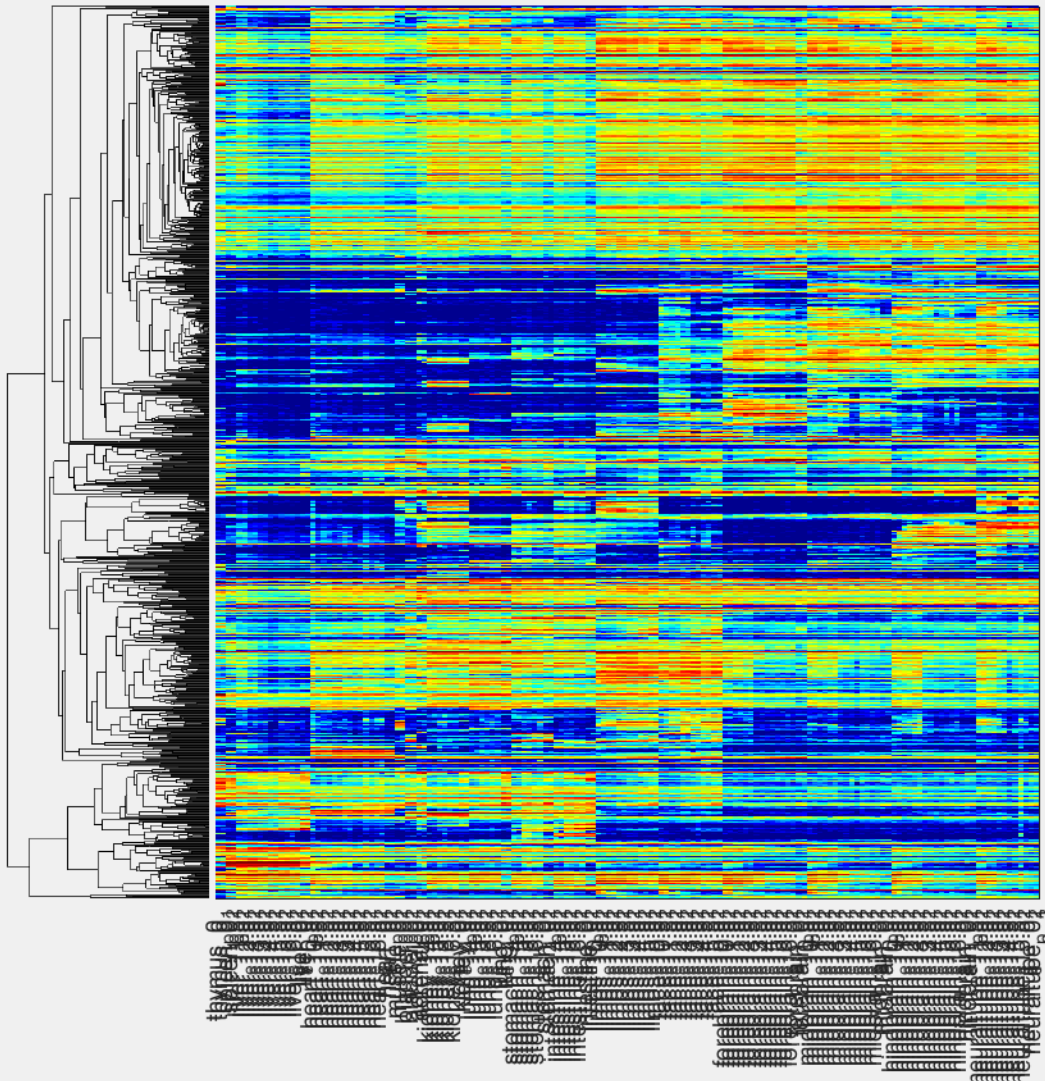
170507

Dyn TF Clusters

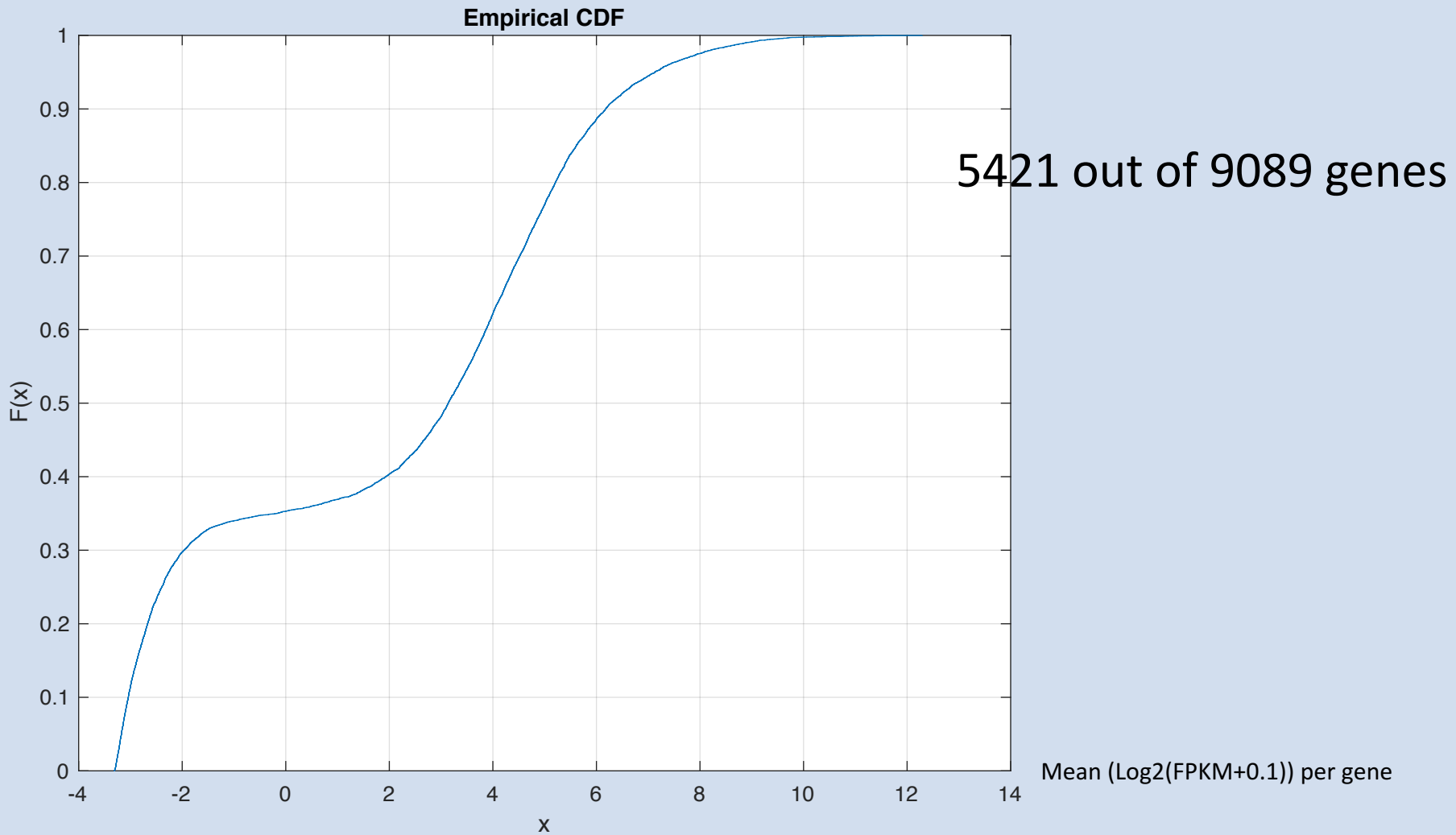


ETS THR Fox Hom MYB POU STATRHD Tbx GATA ARIDbZIP ZBTB bHLH IRF C/EBP MBD HMG PAX ZFN RFX Nr

Dyn TF Clusters absolute

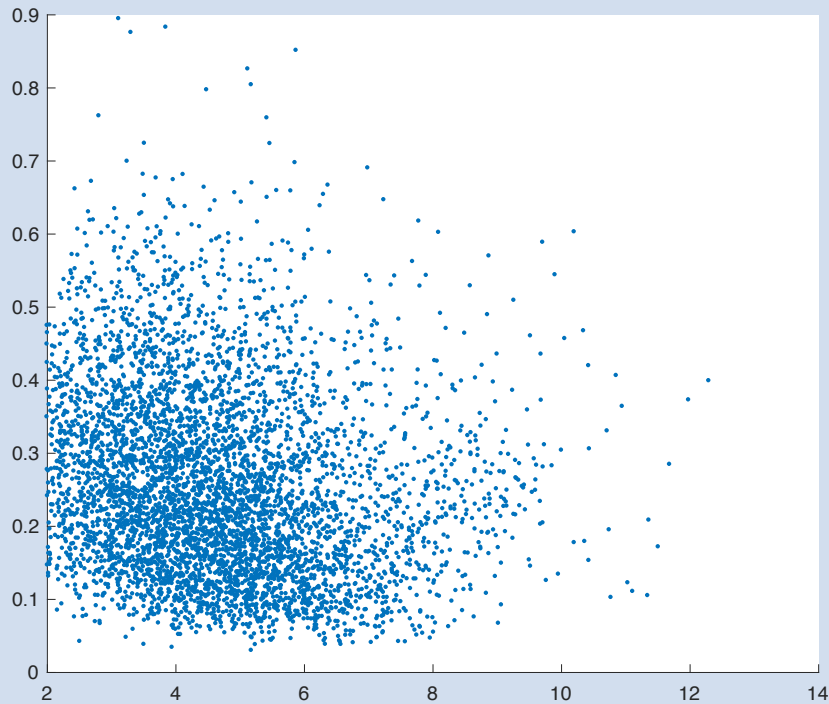


Log₂(FPKM+0.1)>2 is closed to a critical point



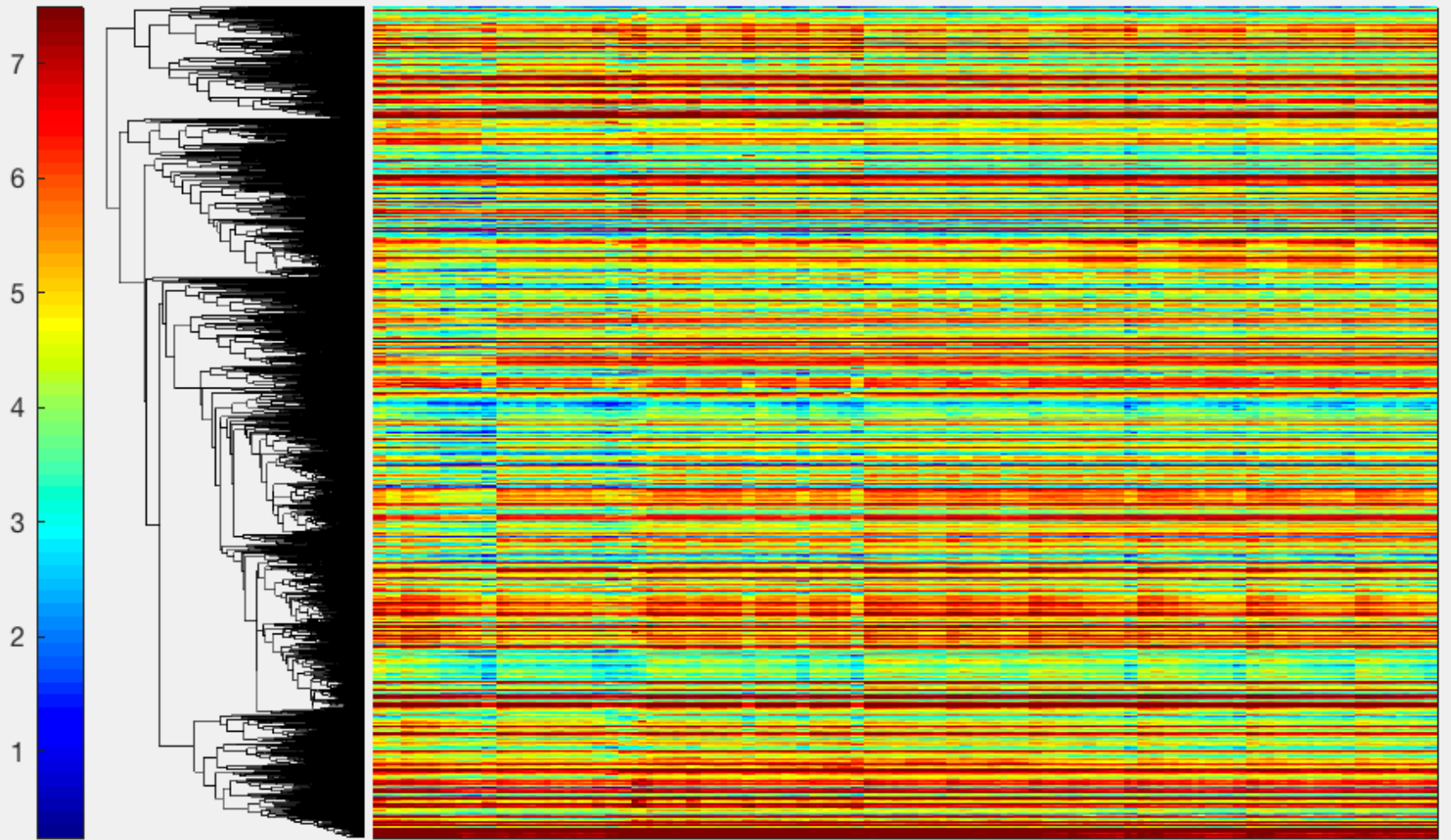
Varance < 0.3 => 3752 out of 5421 genes

var



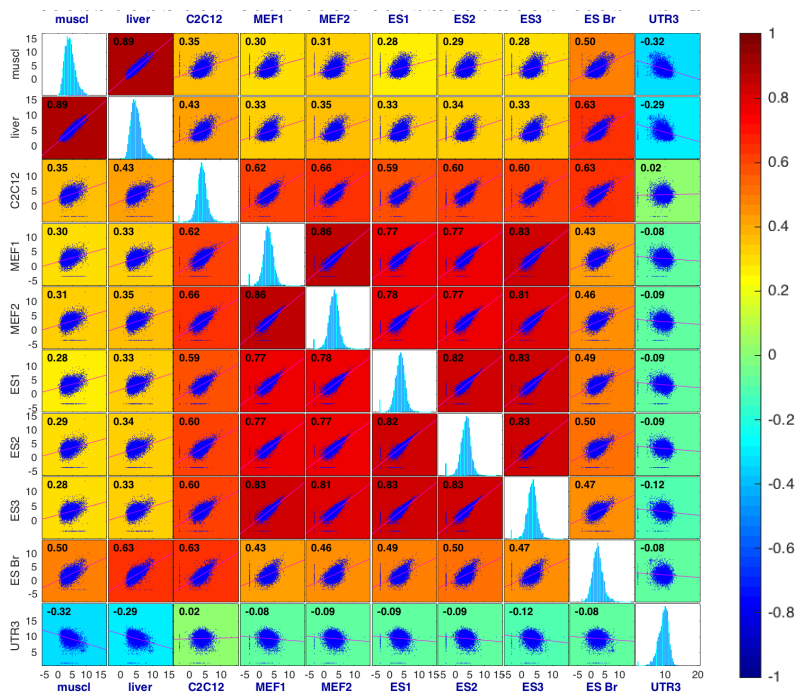
mean

I set a threshold to get the top 3000
Most stable genes, and divide into
1000 per group

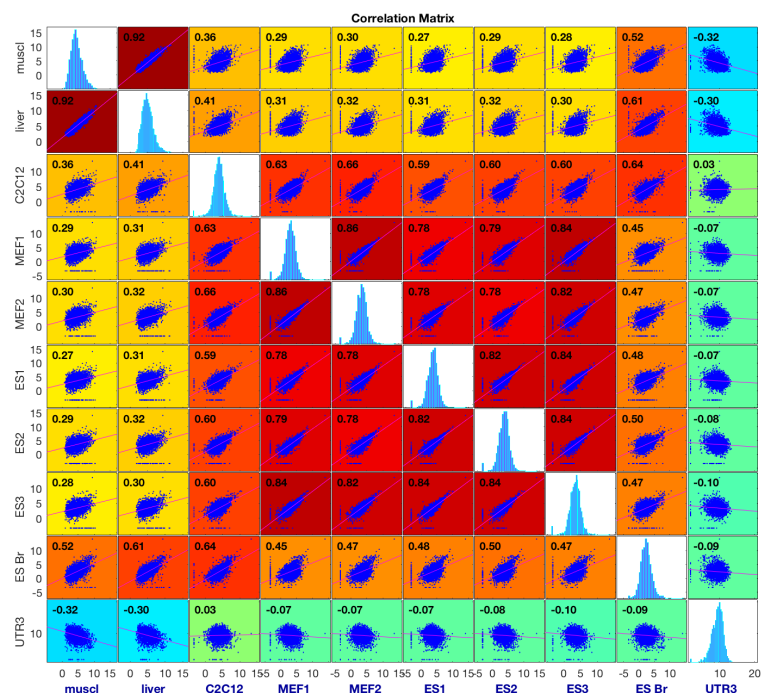


Global features are very similar after the new cut

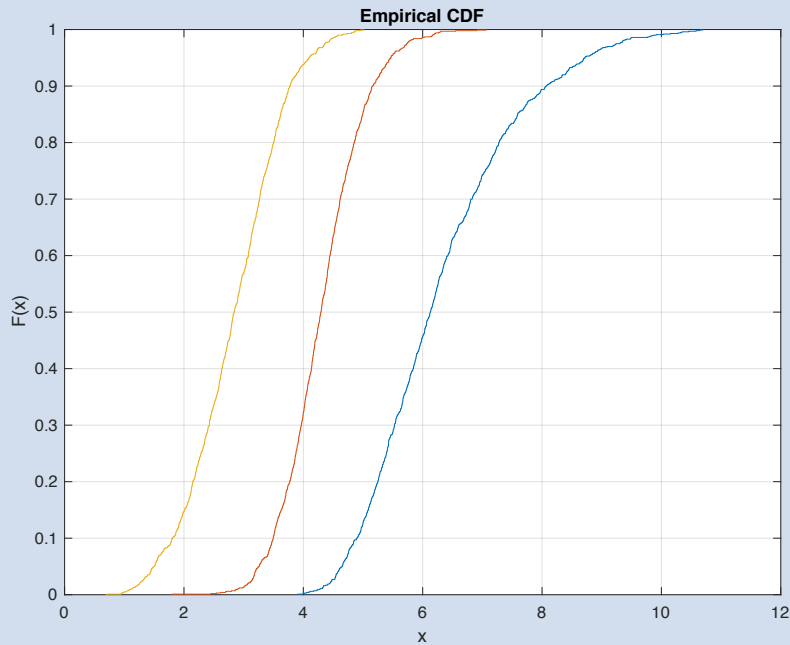
Old



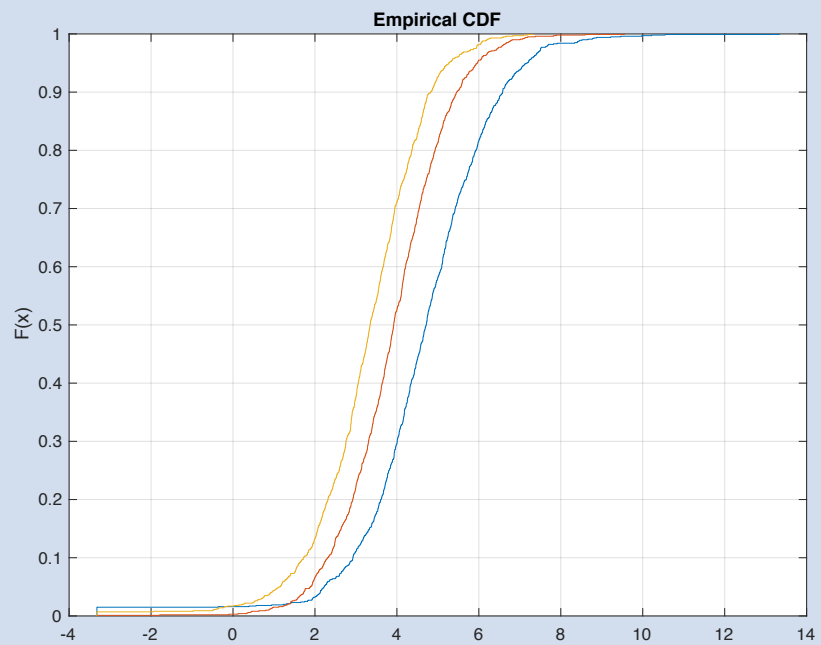
New



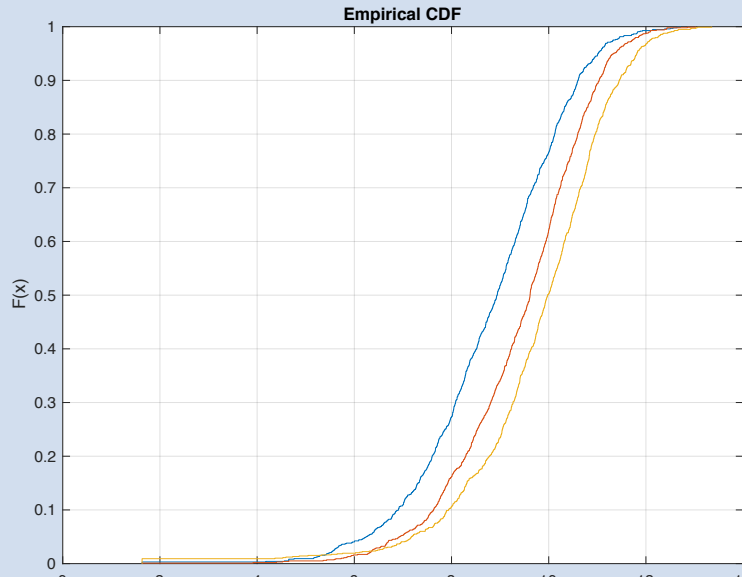
New Plots Muscle mRNA and C2C12 GRO



mRNA



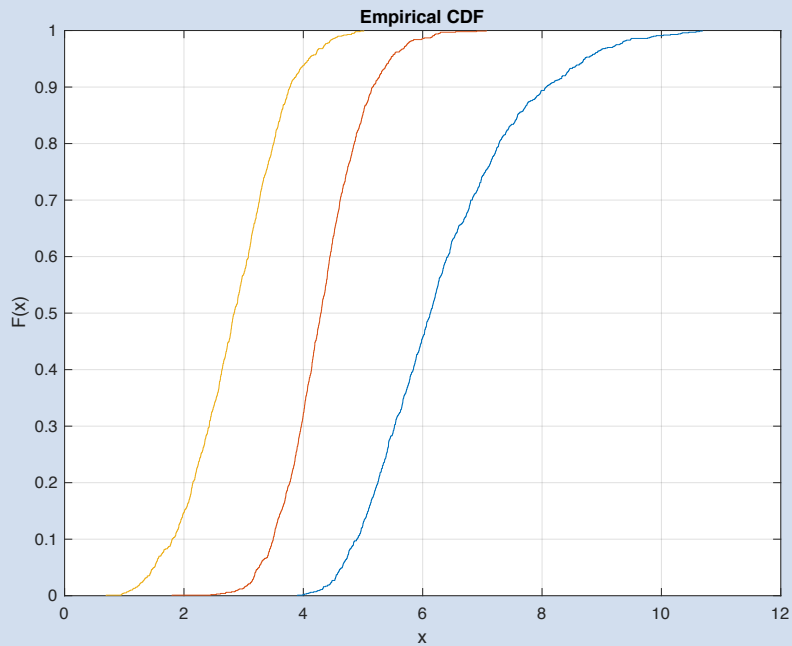
GRO



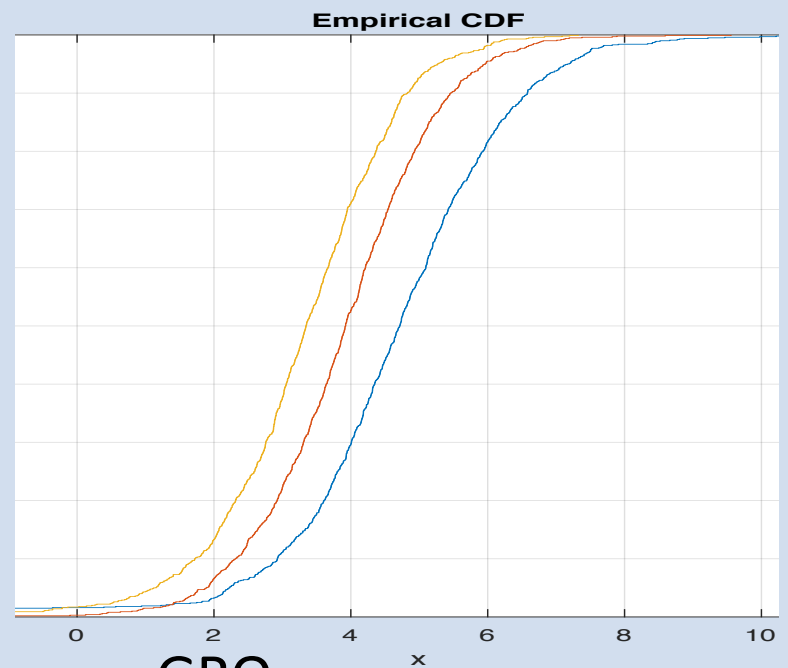
UTR

	mRNA	GRO	3UTR
High vs. med	7.3e-280	1.6e-27	2.7e-20
Med vs. low	1.6e-312	6.5e-25	9e-8
High vs. low	0	2.1e-78	6.3e-42

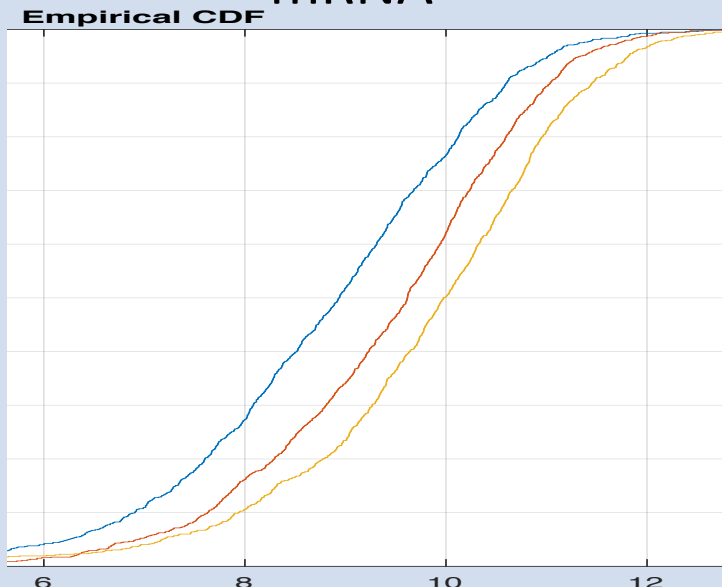
New Plots Muscle mRNA and C2C12 GRO



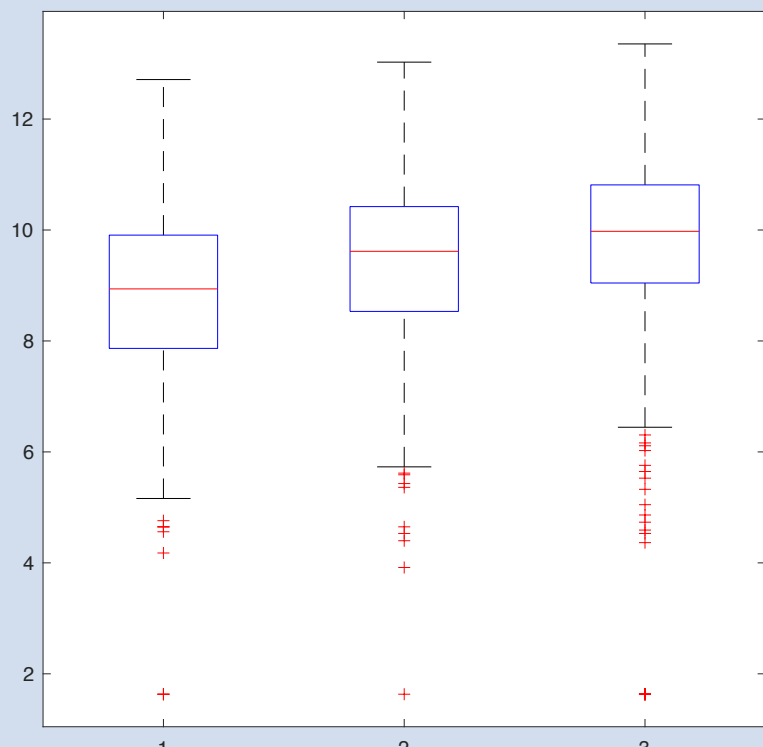
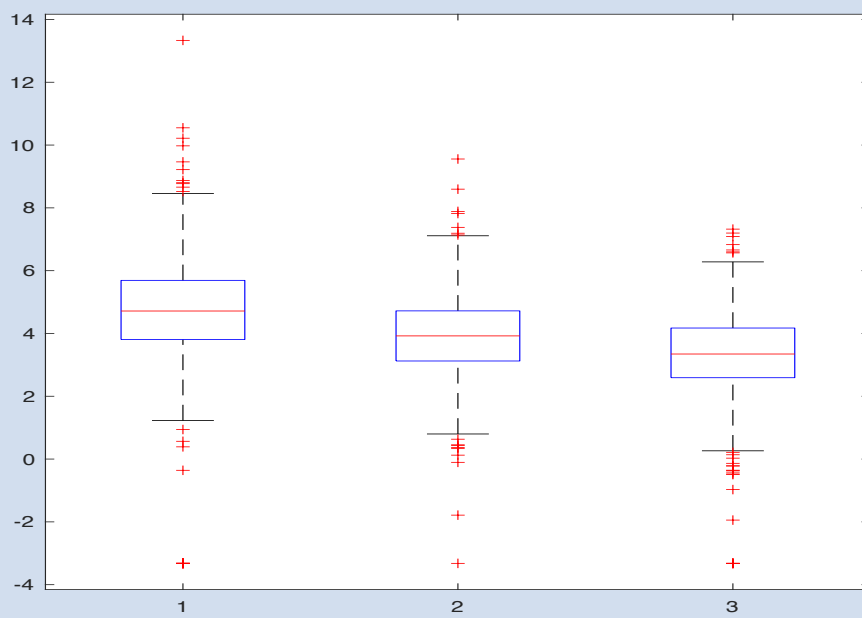
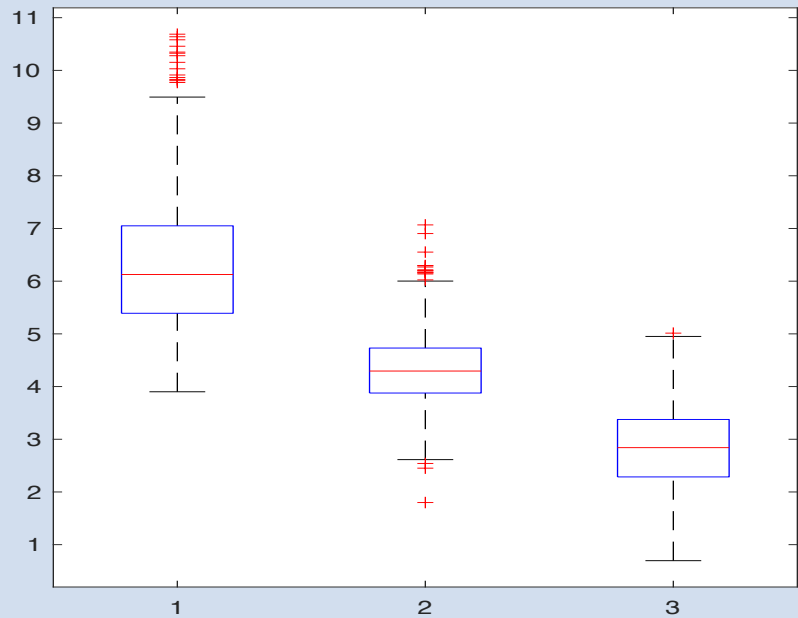
mRNA

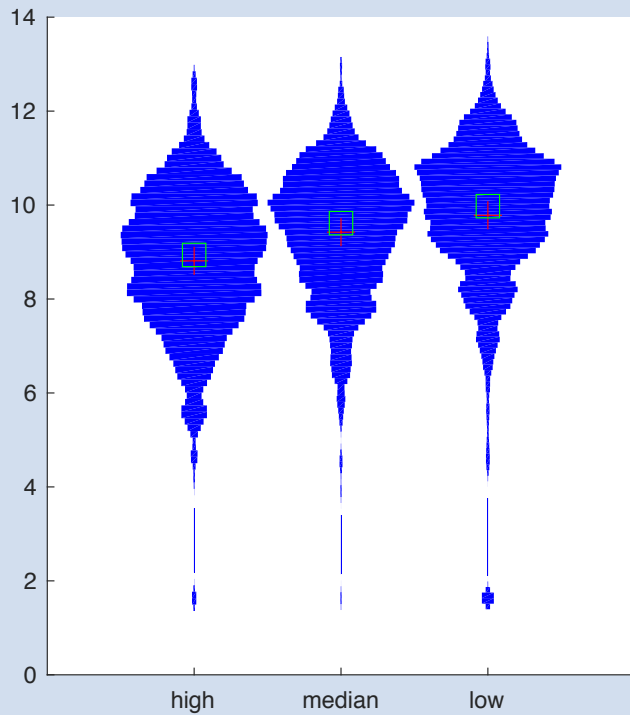
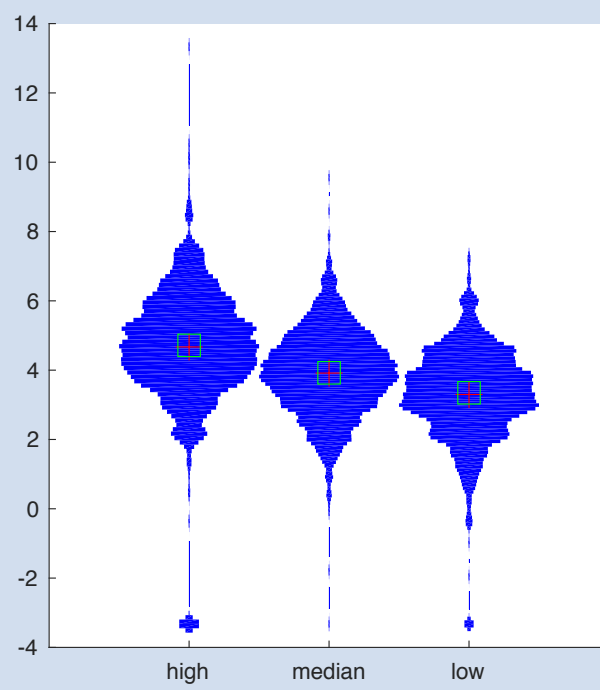
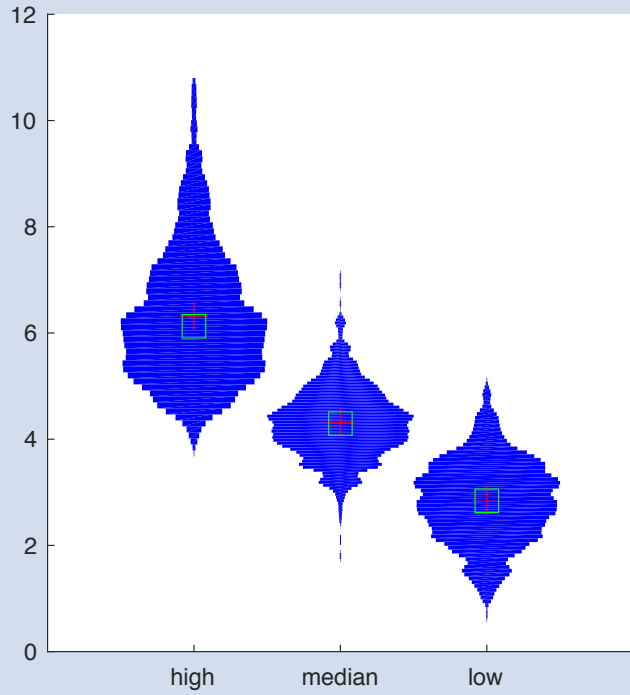


GRO

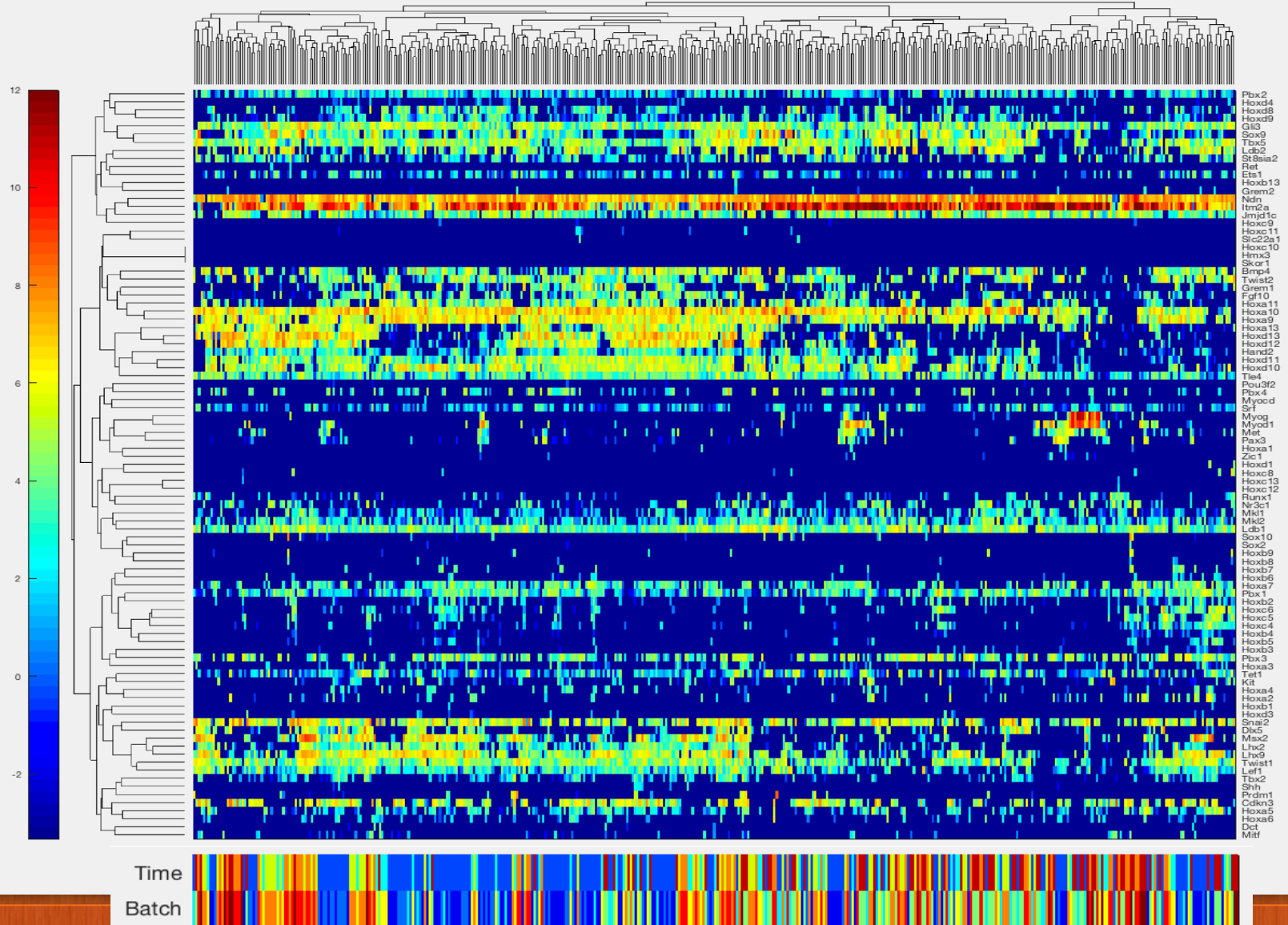


UTR

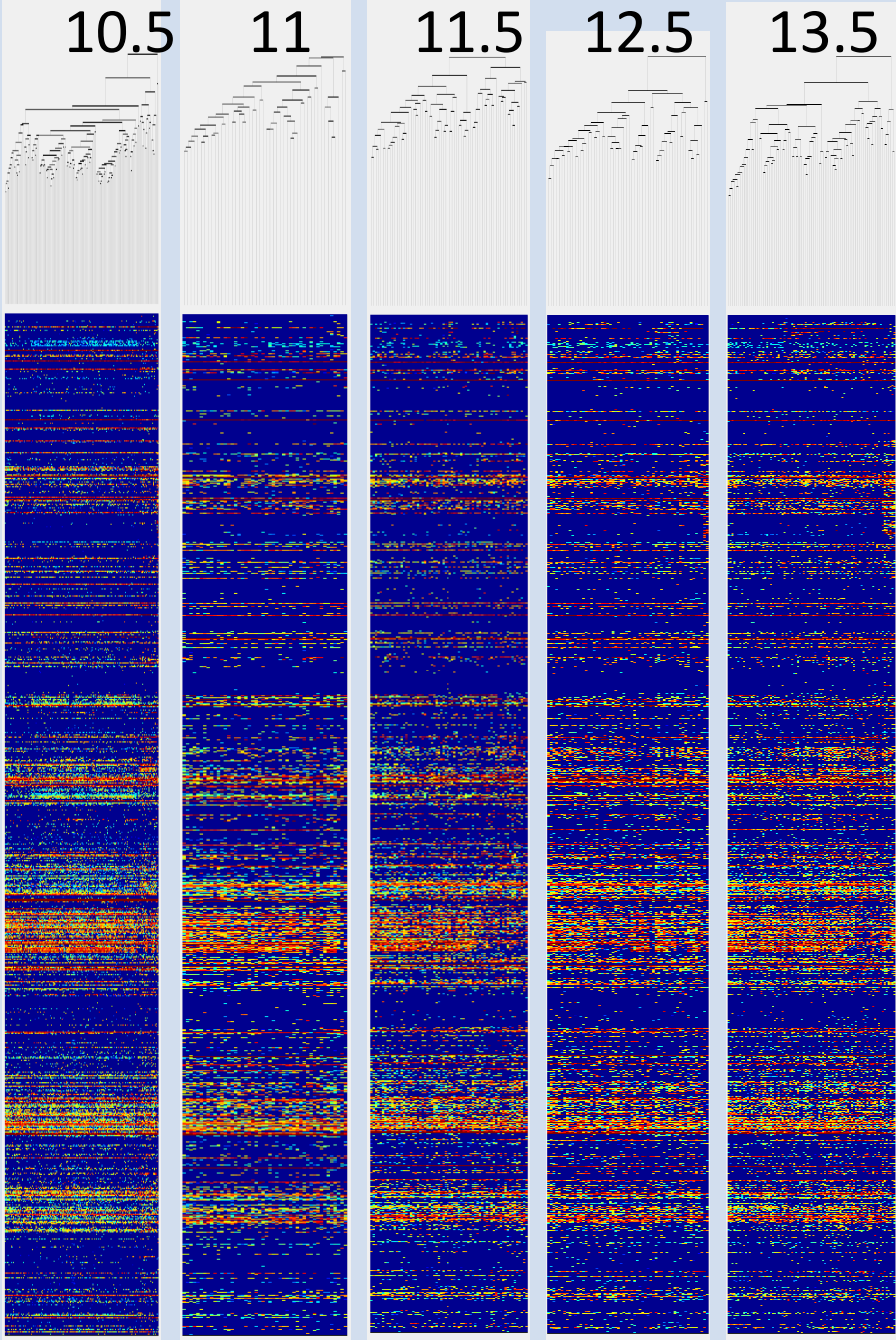
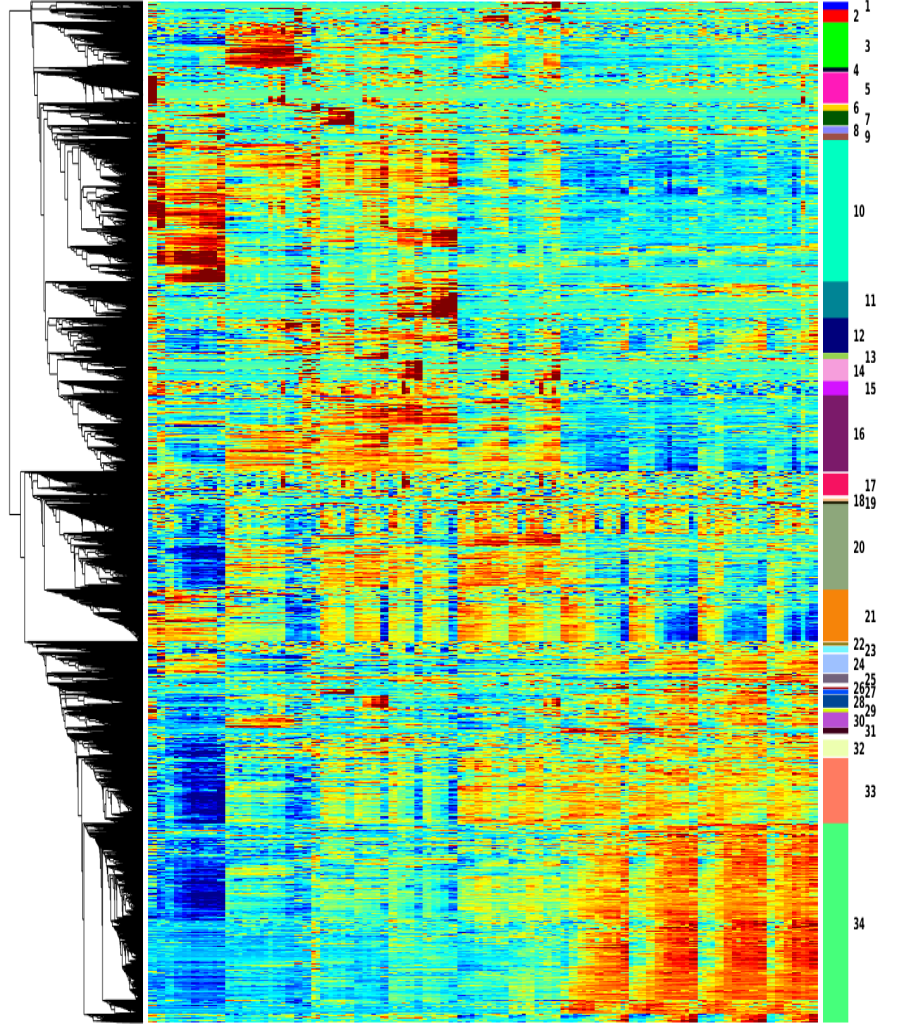




New Single-cell 2D clusters



Map to Bulk

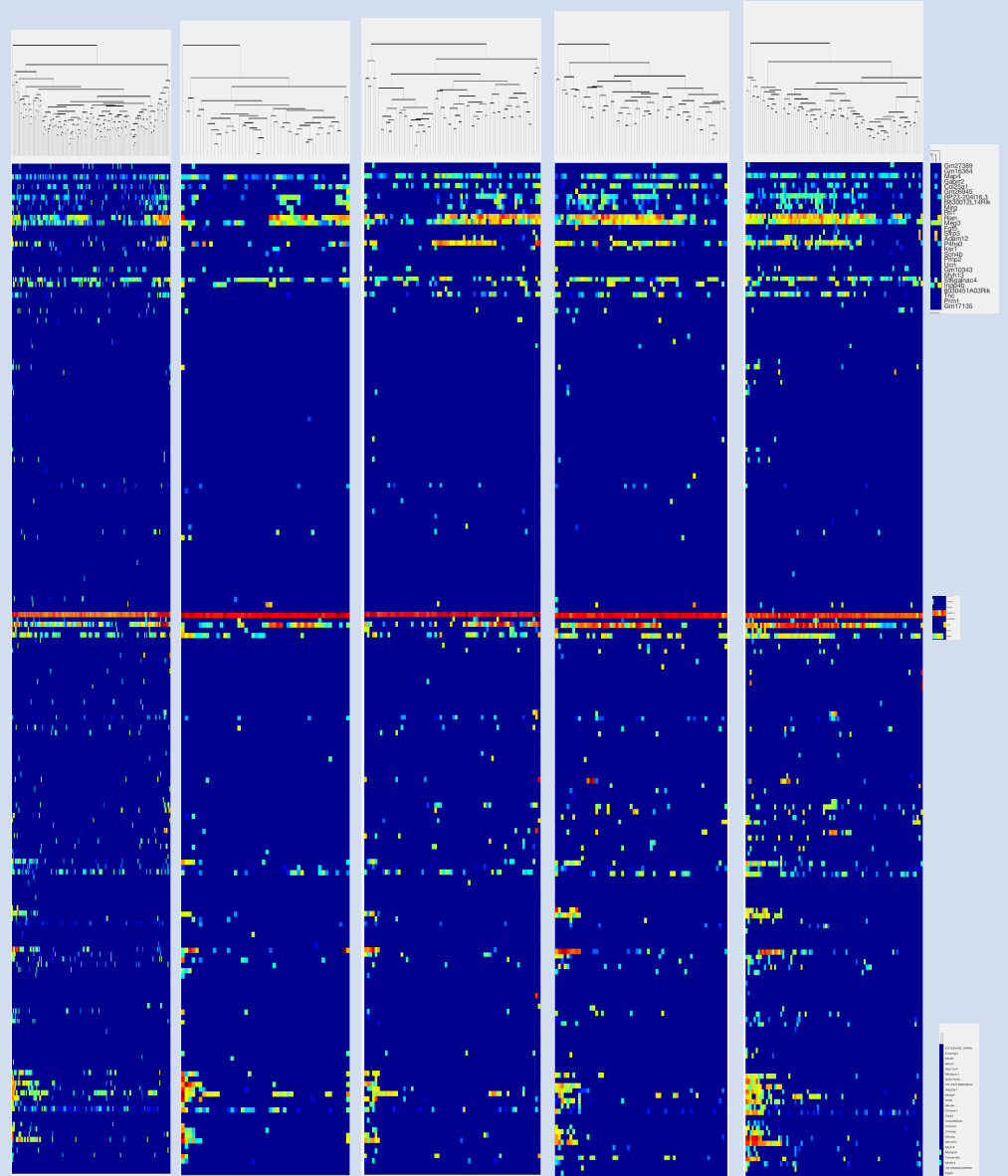
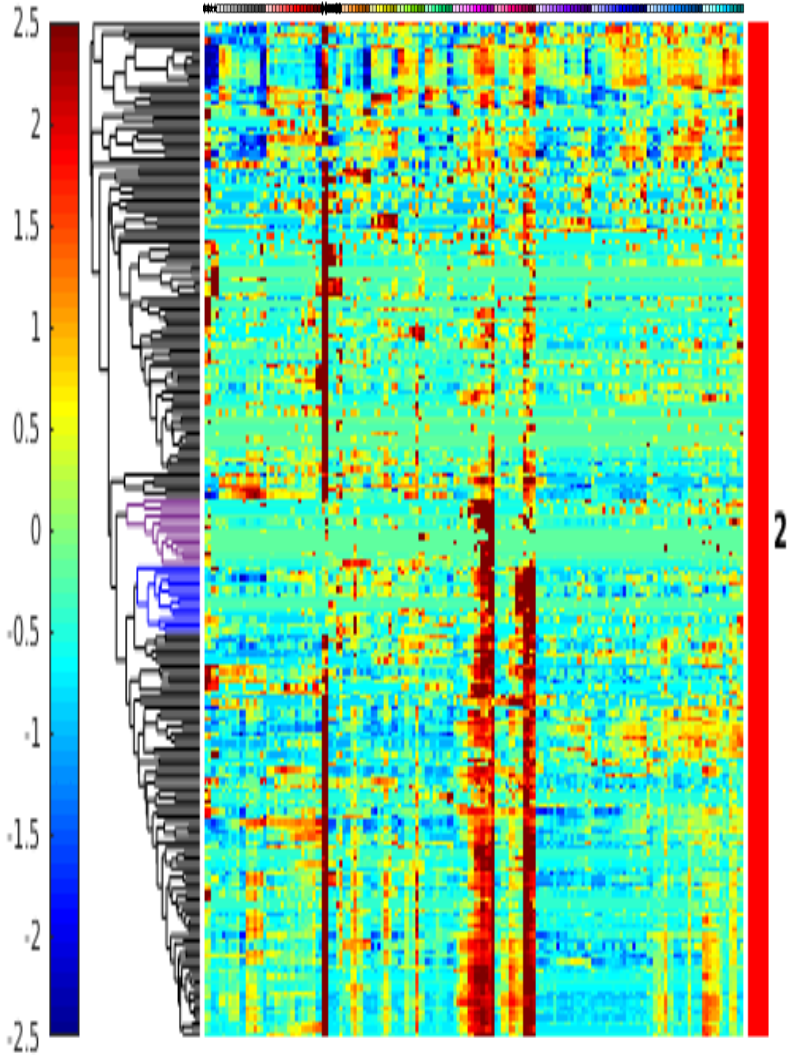


Muscle cluster

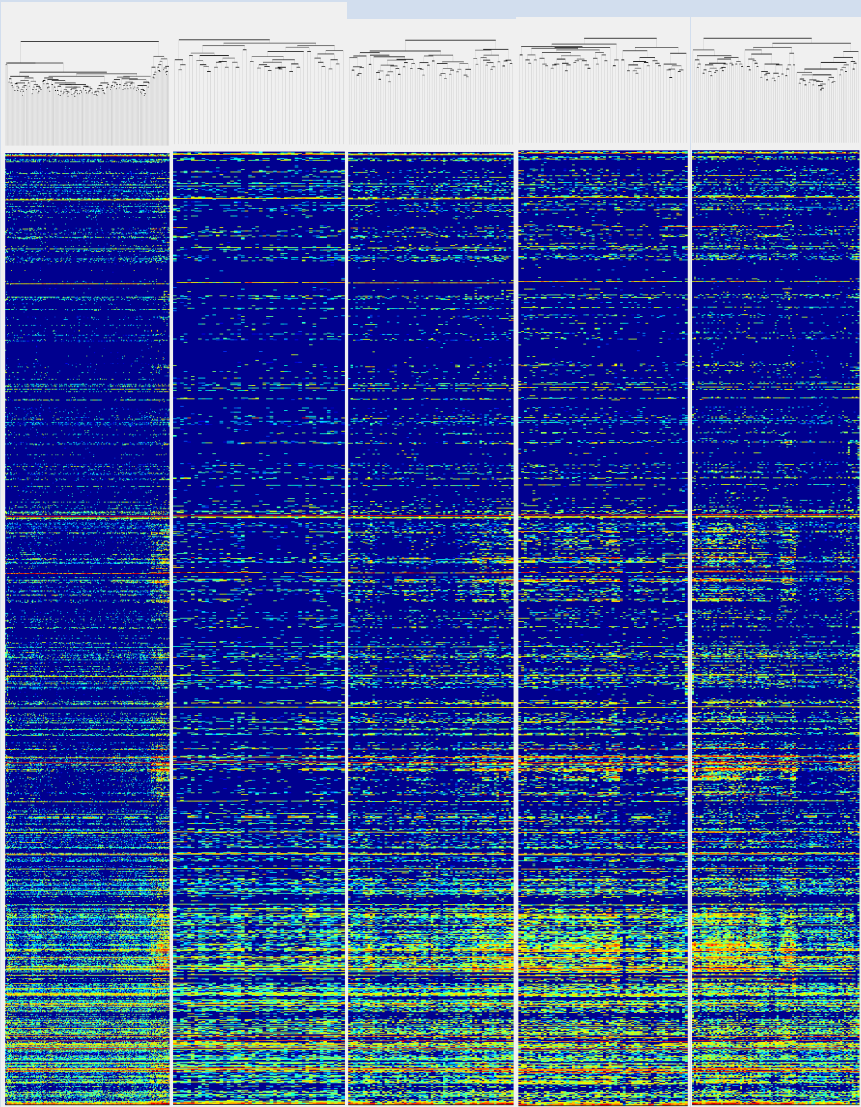
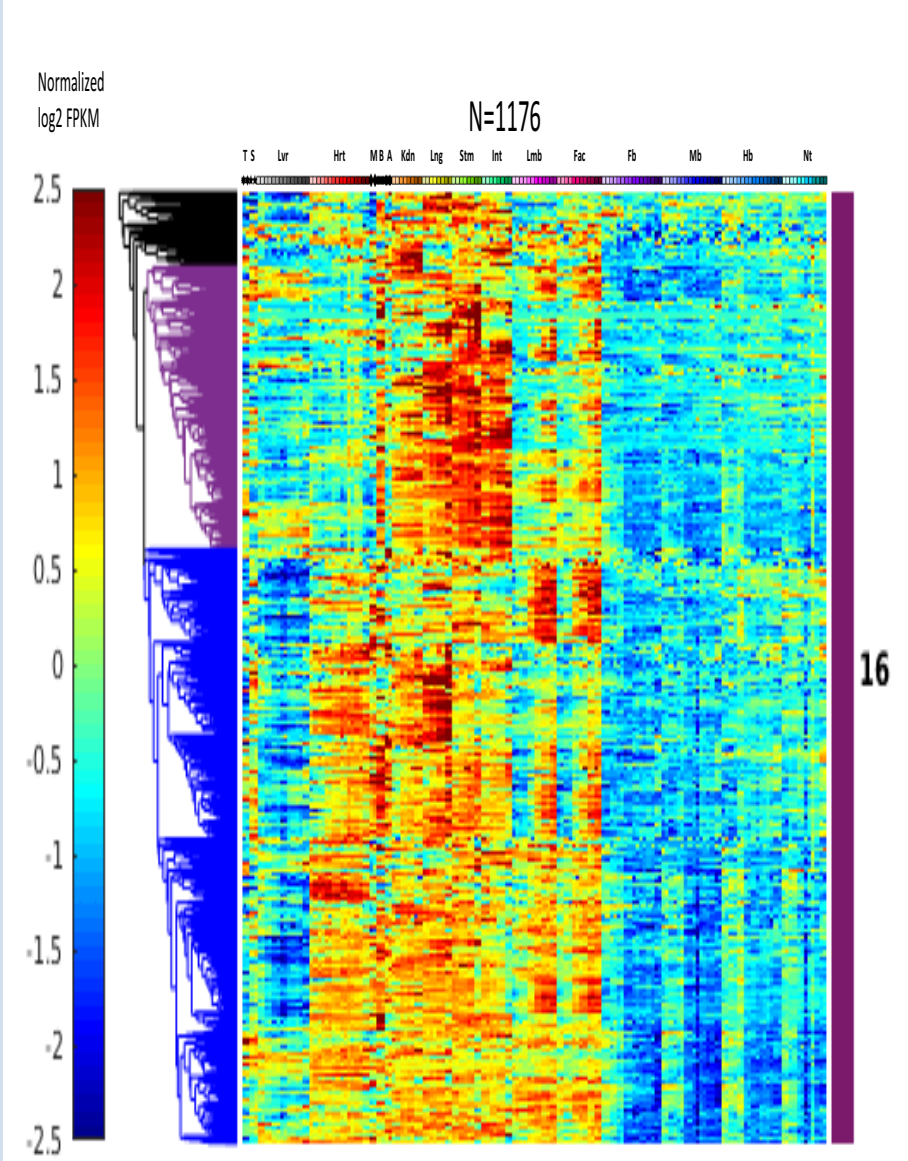
Normalized
log₂ FPKM

N=196

T S Lur Hrt MB A Kidn Lng Stm Int Lmb Fac Fb Mb HB Nt



ECM cluster



The three genes lists

'Fap' 'Angptl1' 'Glt8d2' 'Col12a1' '4930562D21Rik' 'Ssc5d' 'Trpm5' 'Col24a1' 'Ngf' 'Osr2' 'Galnt5'
'Arhgef19' 'Clcf1' 'Col27a1' 'Ctf1' 'Svep1' 'Emilin3' '2810430I11Rik' 'RP24-370G18.1' 'Hpse2' 'Klf5'
'Sbson' 'Ncmap' 'Stard13' 'Islr' 'Agtr2' 'Arsj' 'Fibin' 'Fam101b' 'Col15a1' 'Ssu2' 'Spsb1' 'Fgf2'
'4833403I15Rik' 'Fgf16' 'Il17b' 'Itm2a' 'Zcchc5' 'Odf3l1' 'Adam33' 'Extl1' 'Nnmt' 'Postn' 'Col6a6'
'Chrnb1' 'Adamts14' 'Klf14' 'Gm22' 'Nfatc1' 'Fbln2' 'Erg' 'Cyt11' 'Pcsk6' 'Dab2' 'Lum' 'Col7a1'
'Col8a2' 'Vgll3' 'Ptgfr' 'Gxylt2' 'Lrrc15' 'Wnt16' 'Ch25h' 'Gm26902' 'Egfl6' 'Phex' 'Matn4' 'Adamtsl3'
'Scara5' 'Fgf7' 'Lgr6' 'Htra1' 'Ltbp3' 'Fndc1' 'Pdgfrl' 'Prss35' 'Csgalnact1' 'Adamts5' 'Olfml2a' 'Pde7b'
'Samd4' 'Cspg4' 'Lmcd1' 'Prnd' 'Mamstr' 'Ctsk' 'Spats2l' 'Col8a1' 'Pthlh' 'Aebp1' 'Fmod' 'Per1'
'Opn1sw' 'Sash1' 'Rassf8' 'Jdp2'

'Cav2' 'Cav1' 'D830026I12Rik' 'Ptrf' 'Eln' 'Mgp' 'Fstl3' 'Fbln5' 'Nfic' 'Tslp' 'Mr1' 'Procr' 'Ltbp4'
'SrpX2' 'Vstm4' 'Plscr4' 'Tnfsf12Tnfsf13' 'Tnfsf12' 'C1qtnf7' 'Tmem204' 'Fmo2' 'Cracr2b' 'Col6a1'
'Col6a2' 'Col6a3' 'Lox' 'Ogn' 'Aspn' 'Abi3bp' 'Thbs2' 'Creb3l1' 'Col16a1' 'B3gnt9' 'Emp1' 'Kcne4'
'Pmp22' 'Bgn' 'Sparc' 'Prkcdp' 'Loxl1' 'Klf4' 'Itgb4' 'S100a10' 'Axl' 'Smoc2' 'Cd63' 'Sh3d21' 'Cd97'
'Nod1' 'Gadd45b' 'Ahnak' 'S100a11' 'Anxa2' 'Tgfbr2' 'Gm26532' 'Il1rl2' 'Itpril2' 'Gm21541' 'Ccl21a'
'C1qtnf1' 'NlrX1' 'Fos' 'Emp2' 'Rps6ka4' 'Adamts2' 'Dcn' 'Matn2' 'Col14a1' 'Adamtsl4' 'Pbxip1'
'Gm10687' 'Aoc3' 'Gpr133' 'Casp12' 'Mfap5' 'Tnxb' 'Dpt' 'Tnfrsf23' 'Mustn1' '1110007C09Rik' 'Txnip'
'S100a13' 'Msln' 'Gm12840' '4930599N23Rik' 'Gm12854' 'Cd63-ps' 'Traf3ip2' 'Pwwp2b' '9130008F23Rik'
'2810433D01Rik' 'Gem' 'Fosl2' 'Gm15867' 'Timp3' 'Phlda3' 'Pdgfd' 'Tmem159' 'Gm20748' 'Plec'
'Nr4a1' 'Pgm5' 'Zfp52' 'Chrna1os' 'Metrnl' 'Slc31a2' 'Podn' 'Gm12963' 'Ccl7' 'Ccl2' 'AI427809' 'C3ar1'
'Laptm4a' 'Ubtd1' 'Gm9922' 'Kazald1' 'Gm16201' 'L3hypdh' 'Slc35f5' 'Cpq' 'Layn' 'Pdlim2'
'Arhgap27os1' 'Cmklr1' 'Tlr3' 'Gm13056' 'Gm13749' 'Gm20458'

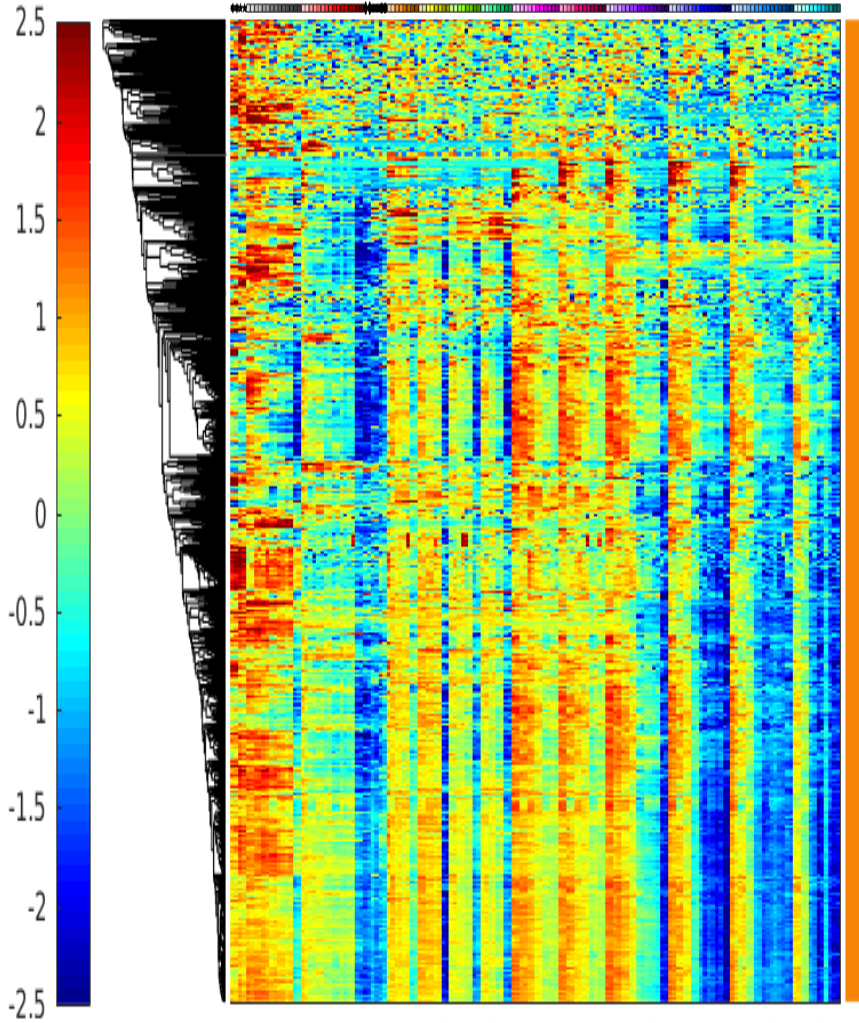
'Timp1' 'Fkbp7' 'Ikbp1' 'C1qtnf6' 'Crtap' 'Lepre1' 'Ppic' 'Fkbp9' 'Kdelc2' 'Fbn1' 'Bicc1' 'Wisp1'
'Kdelr3' 'Ehd2' 'Anxa6' 'Copz2' 'Anxa5' 'Mbnl2' 'Ccadc80' 'Sec24d'

Cell Cycle Cluster

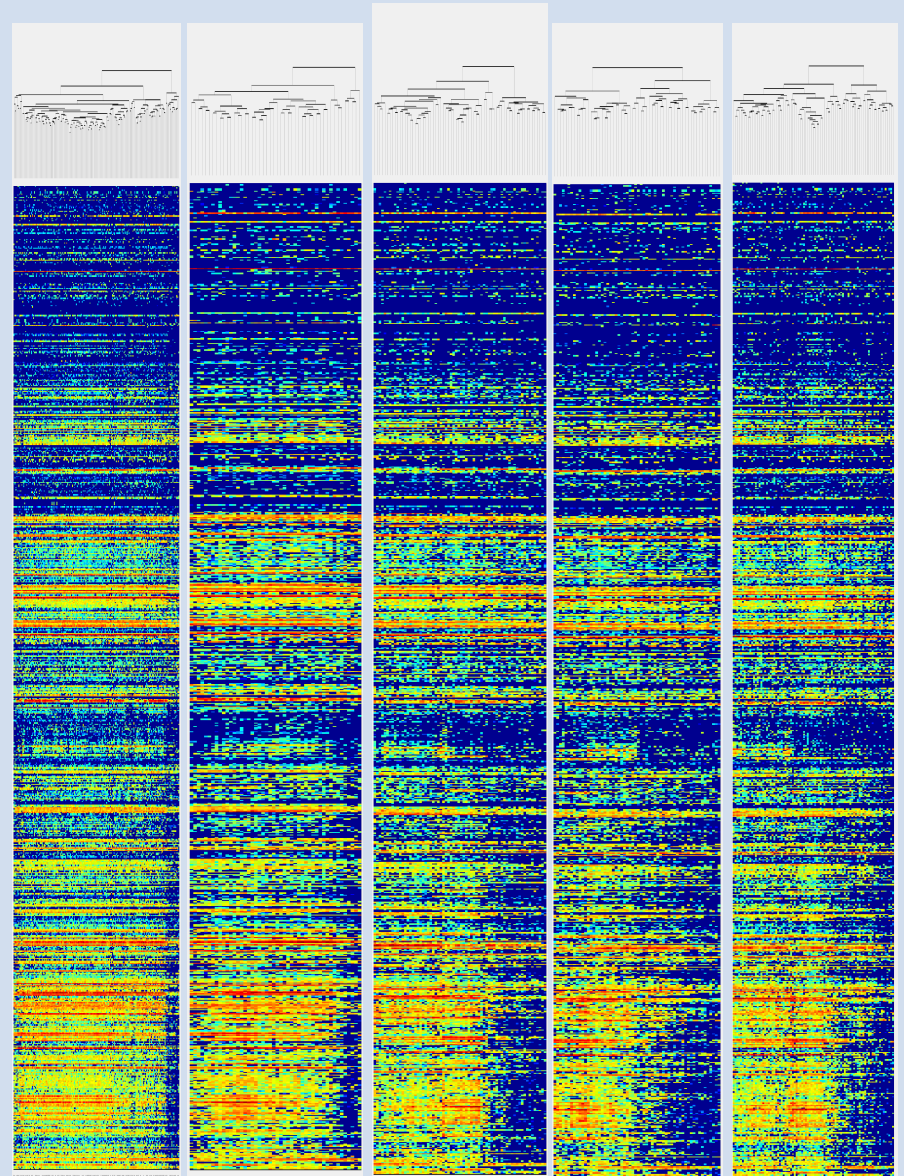
Normalized
log₂ FPKM

N=801

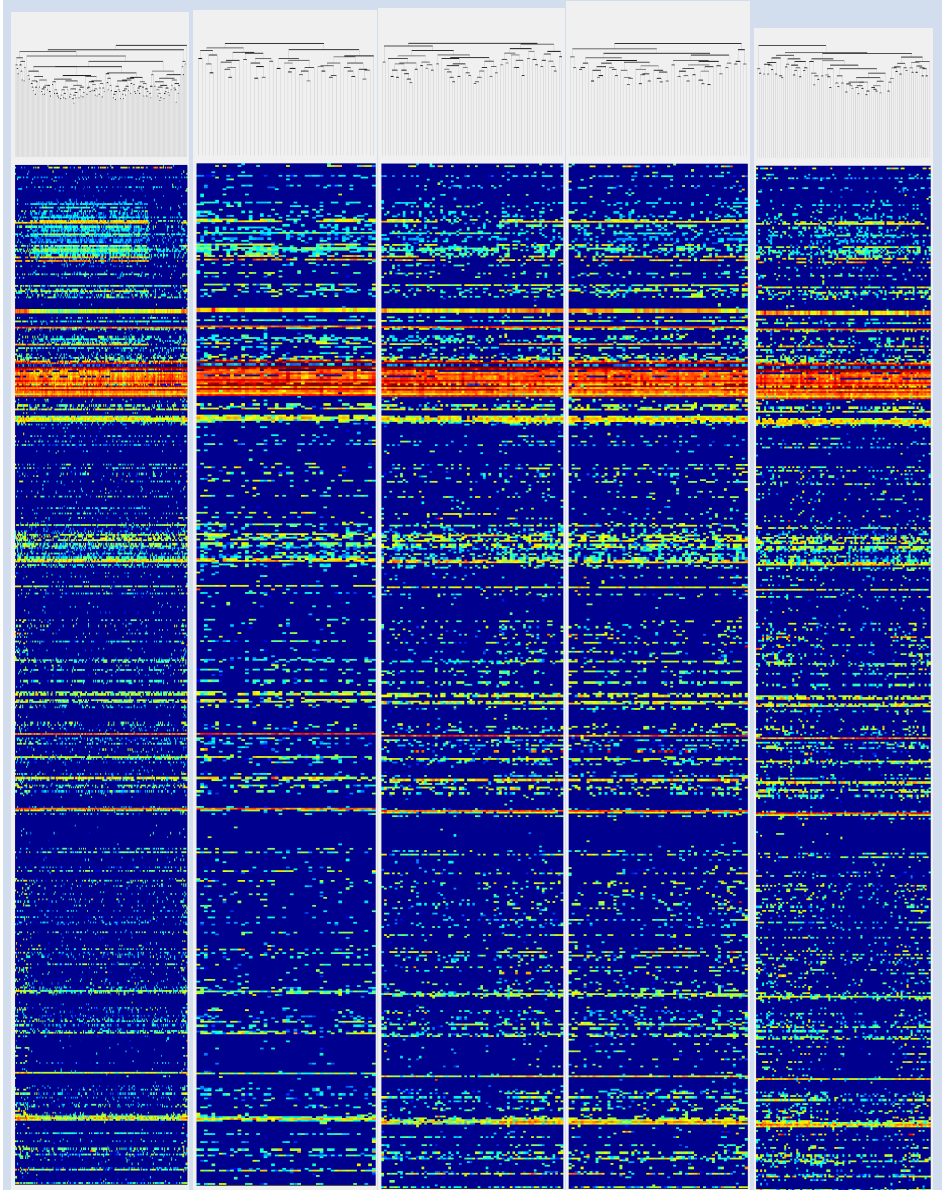
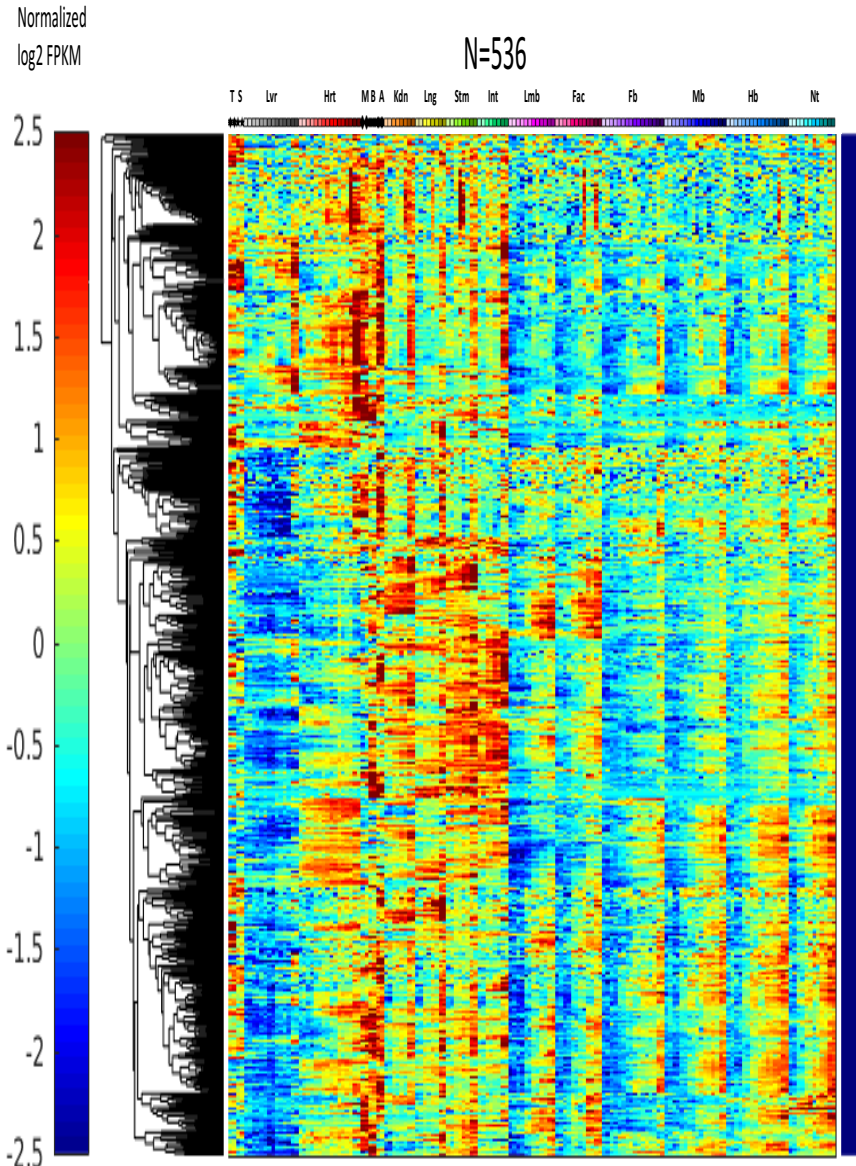
T S Lvr Hrt MBA Kdn Lng Stm Int Lmb Fac Fb Mb Hb Nt



21



NA Cluster

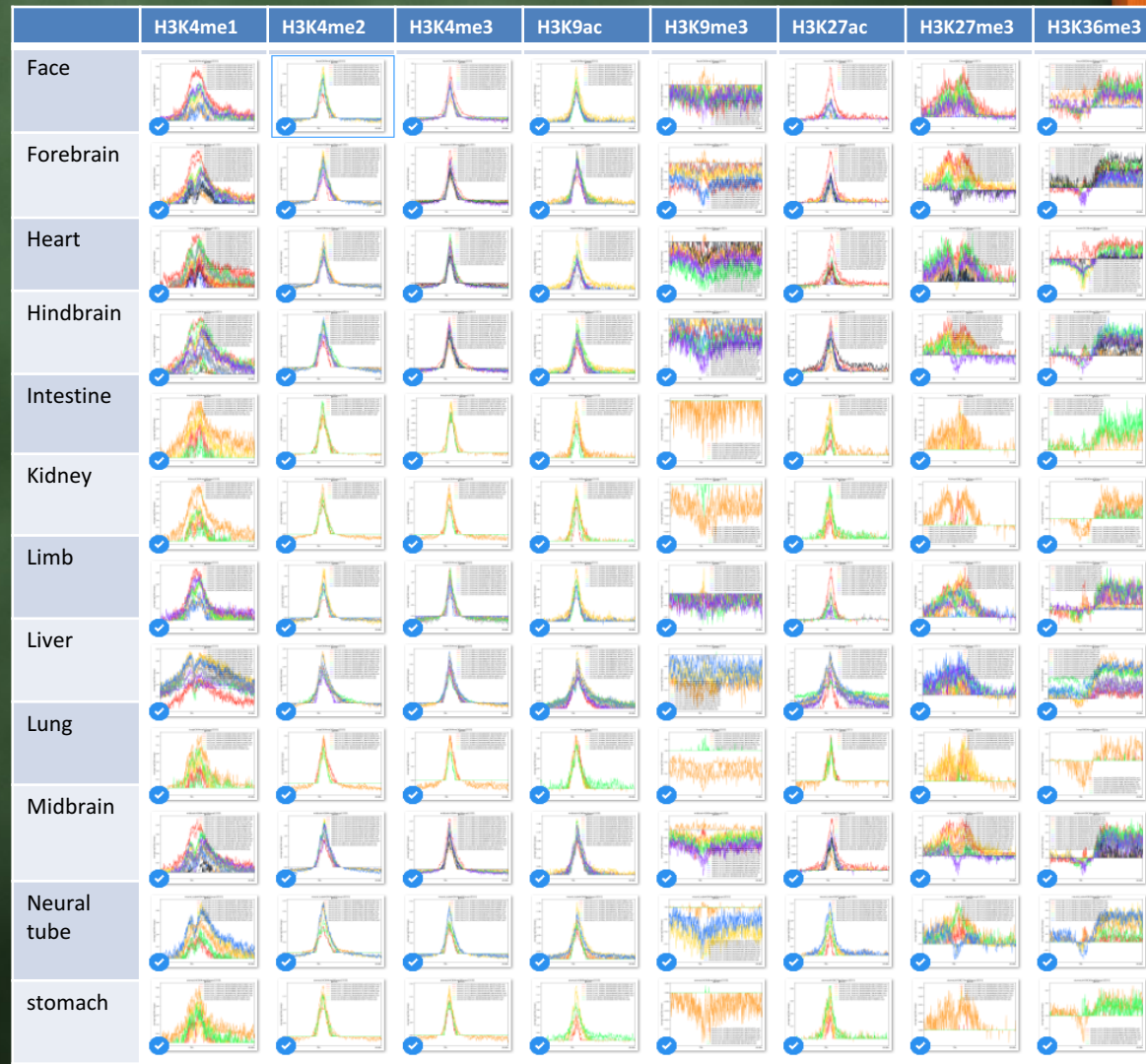


De-repression also happens in the lipid cluster and cilium cluster

15551 lipid

No obvious trends

Brains have De-repression of H3K27me3



De-repression also happens in the lipid cluster and cilium cluster

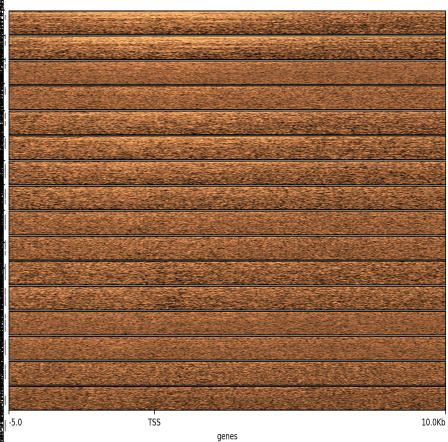
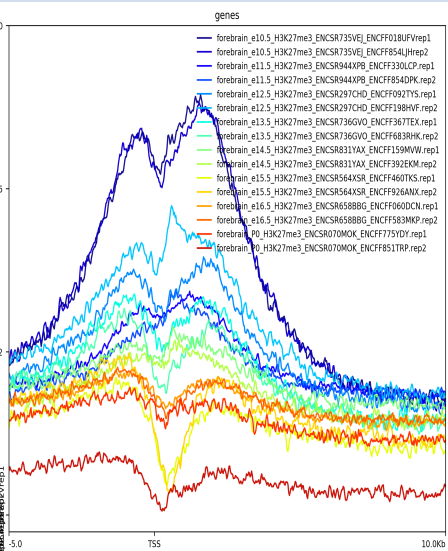
15251 Cilium cluster



No clear relationship

H3K27me3 retreats in heart
and brains

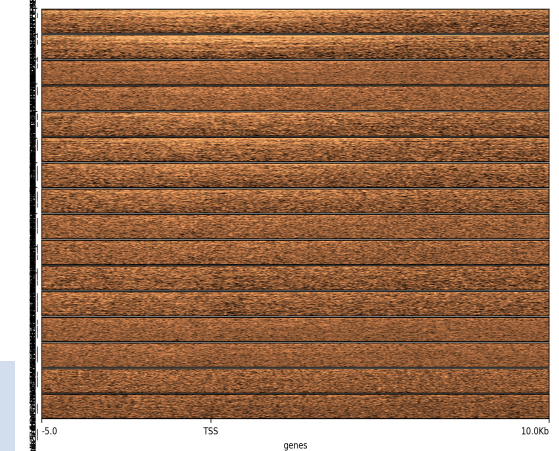
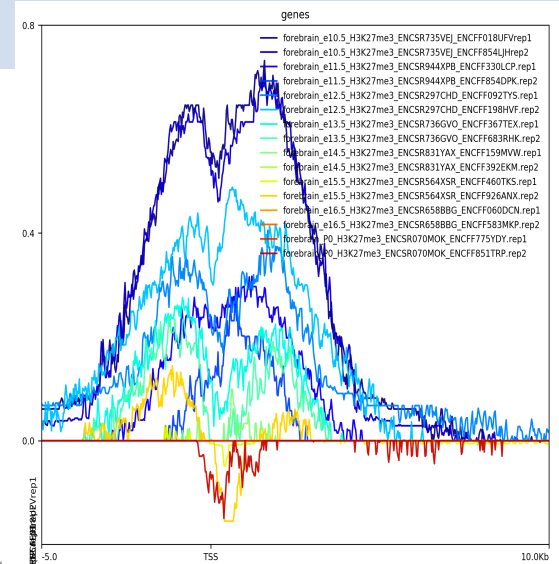
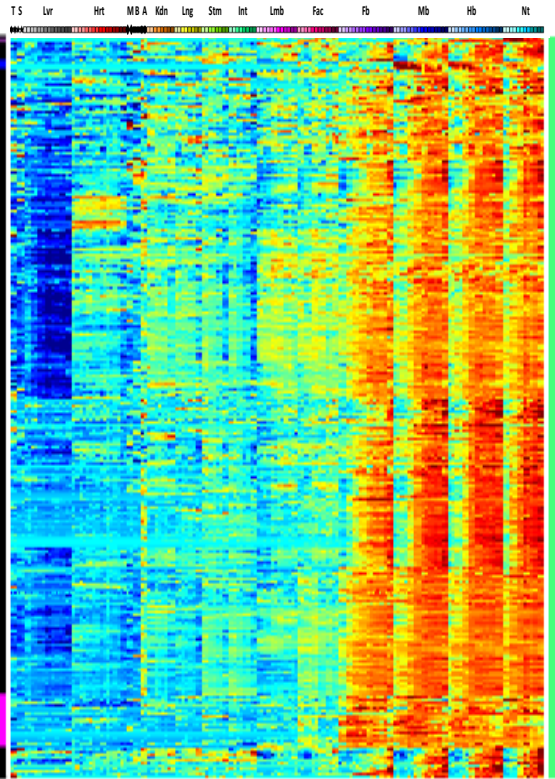
Re-repression story: forebrain



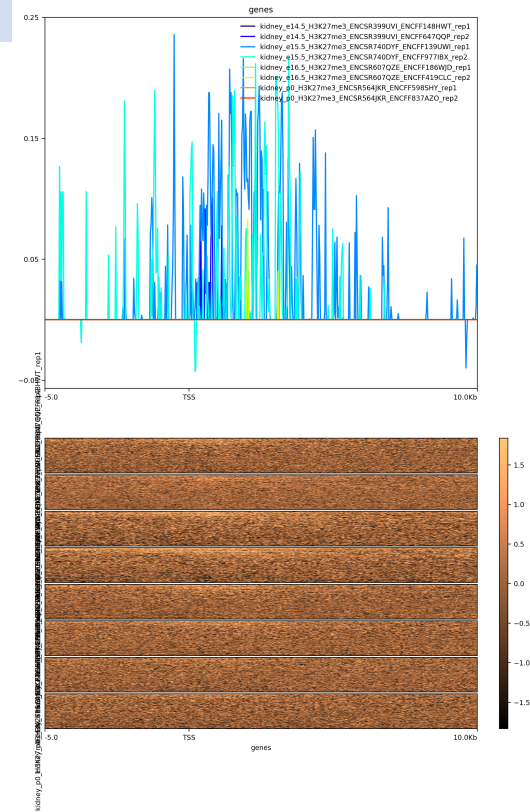
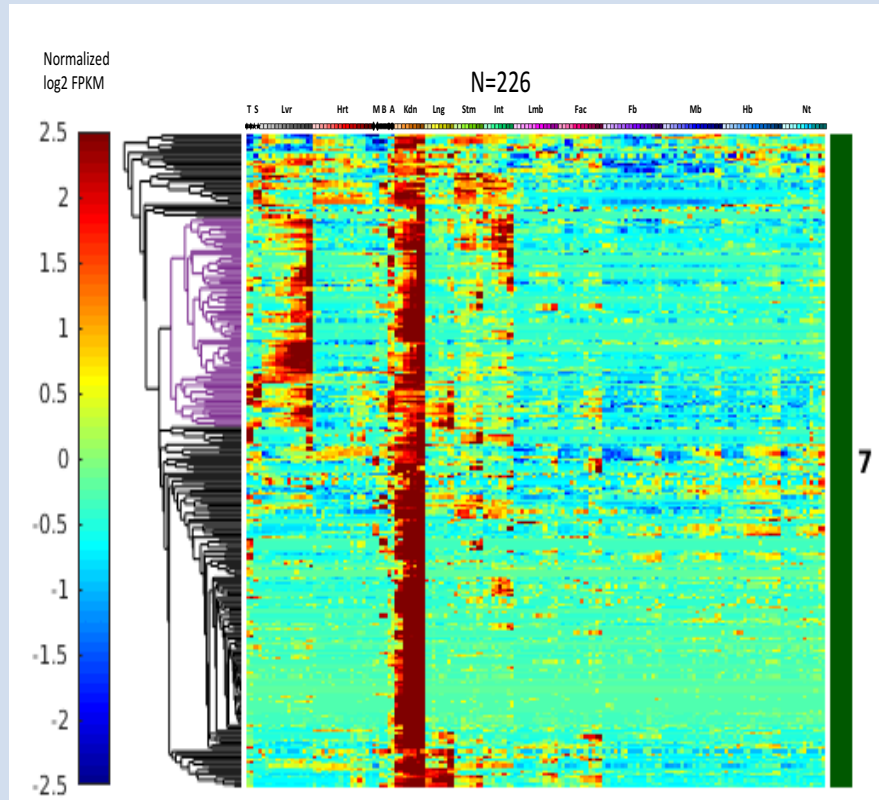
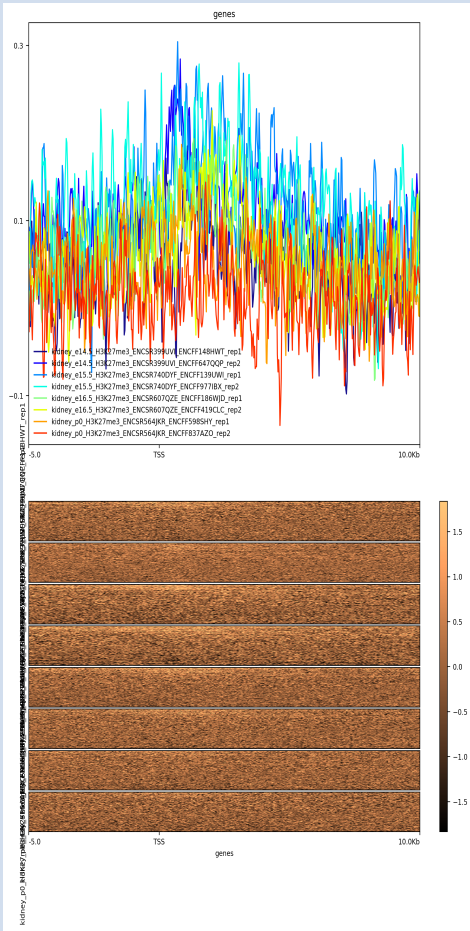
Normalized log₂ FPKM



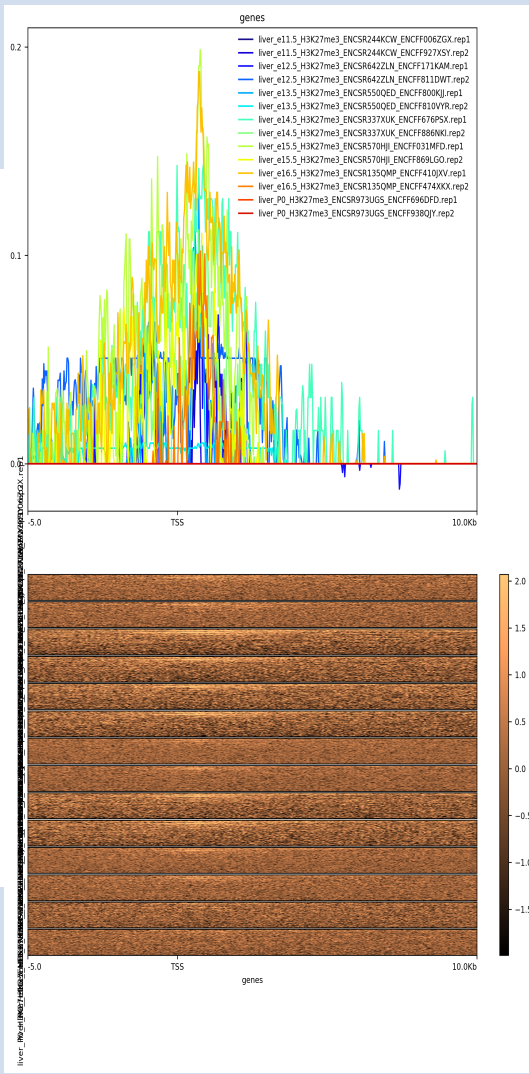
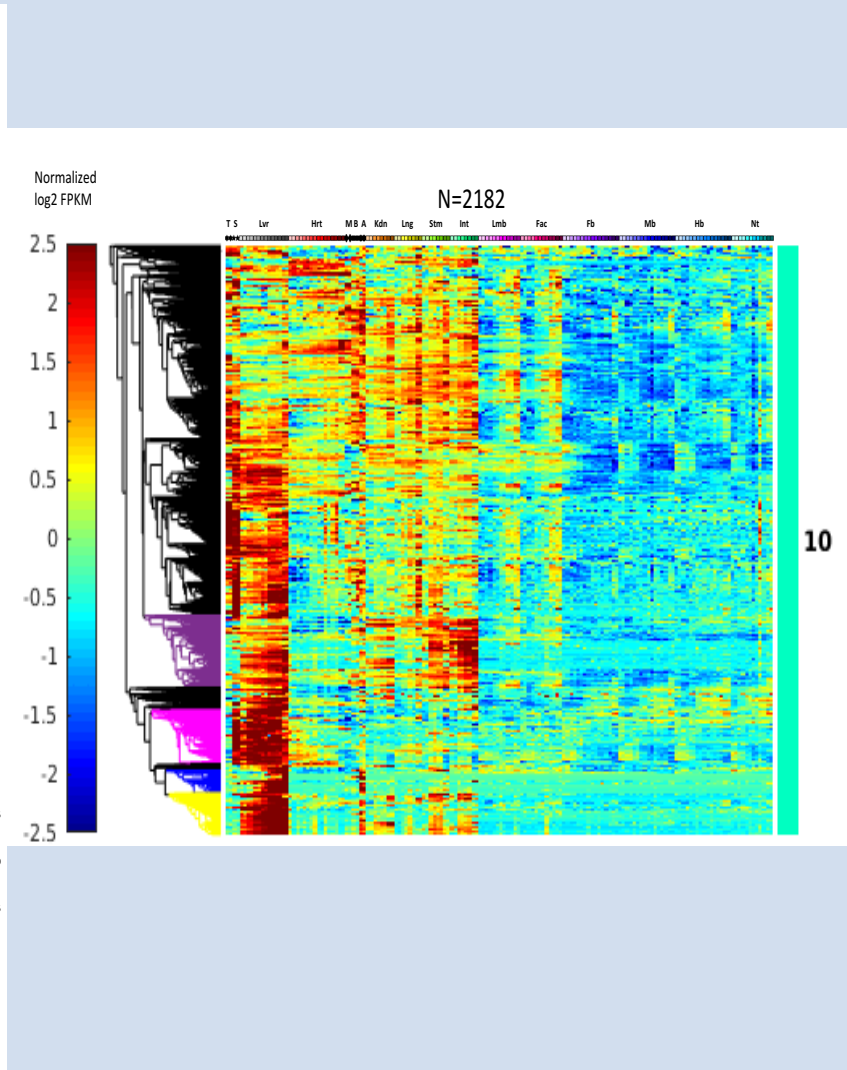
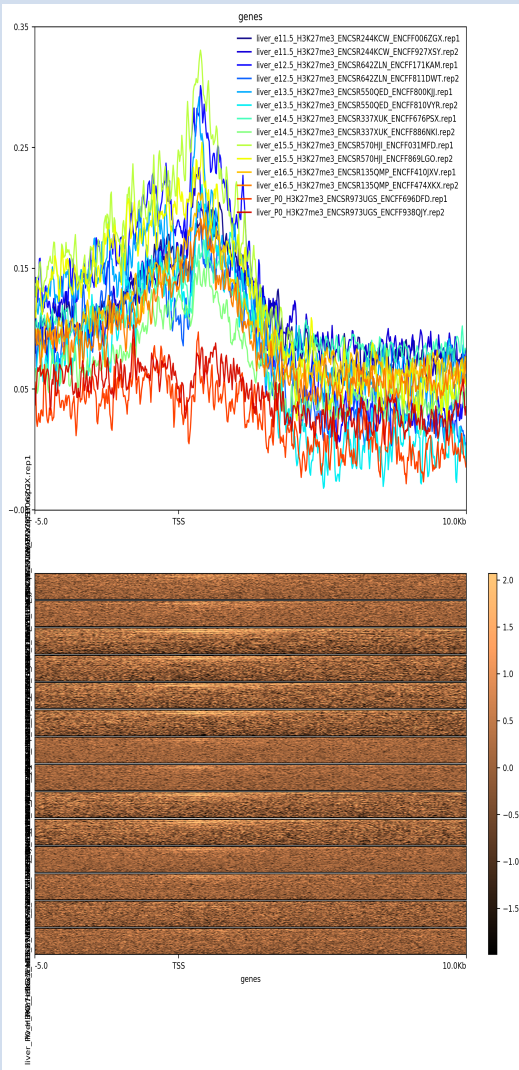
N=3073



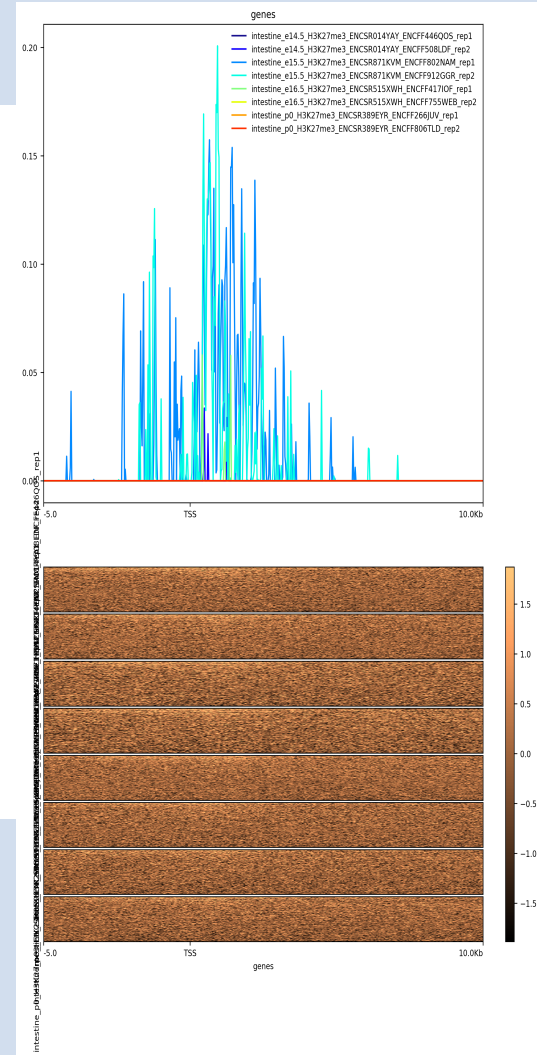
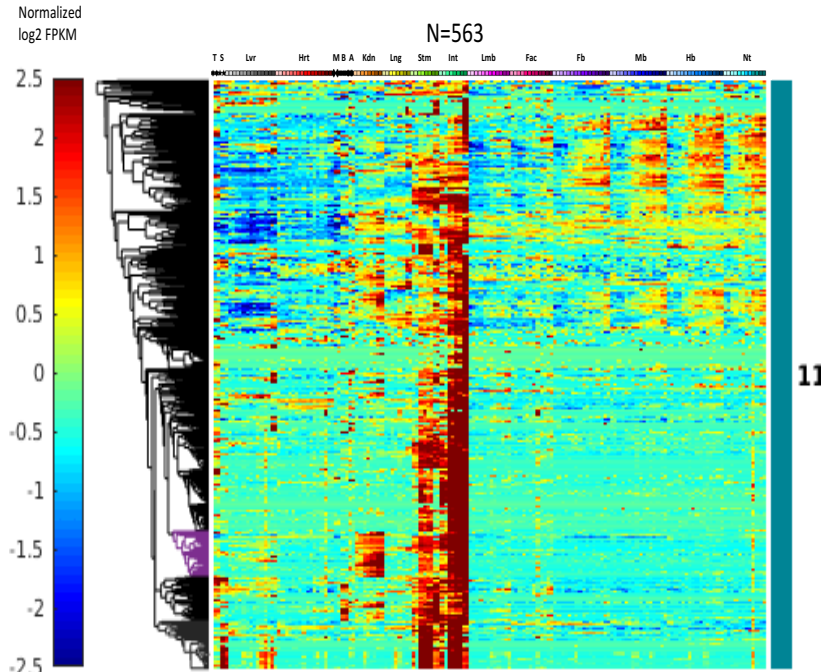
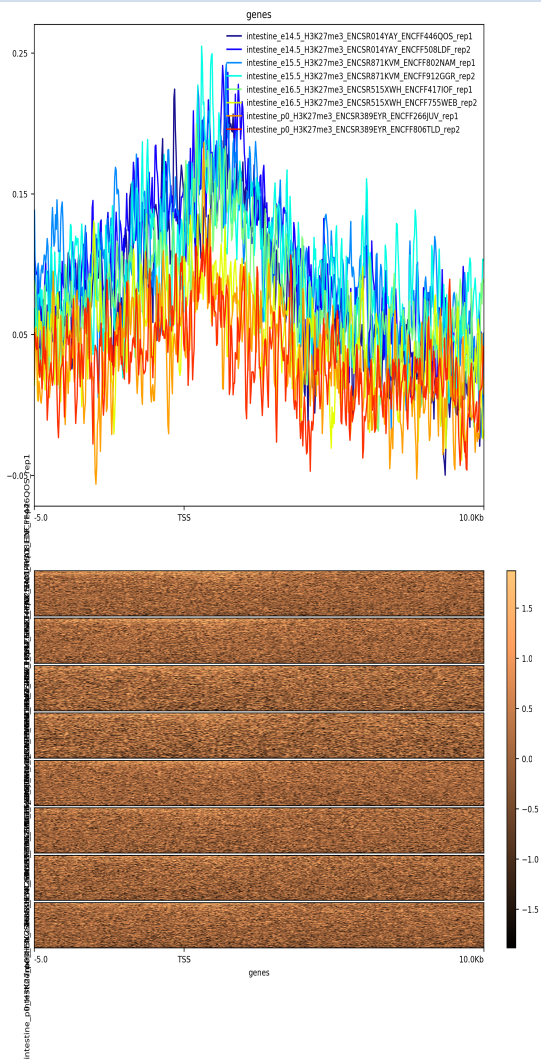
Re-repression story: kidney



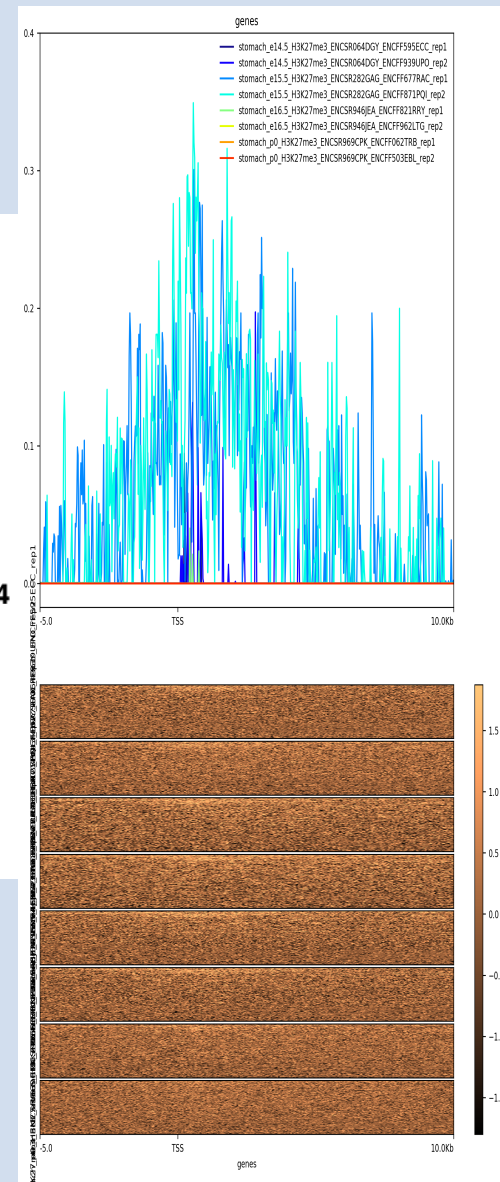
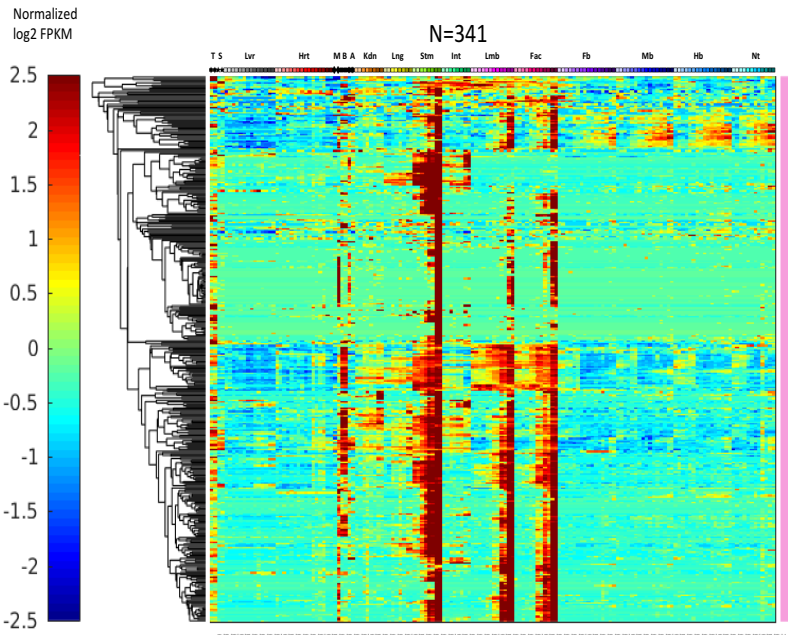
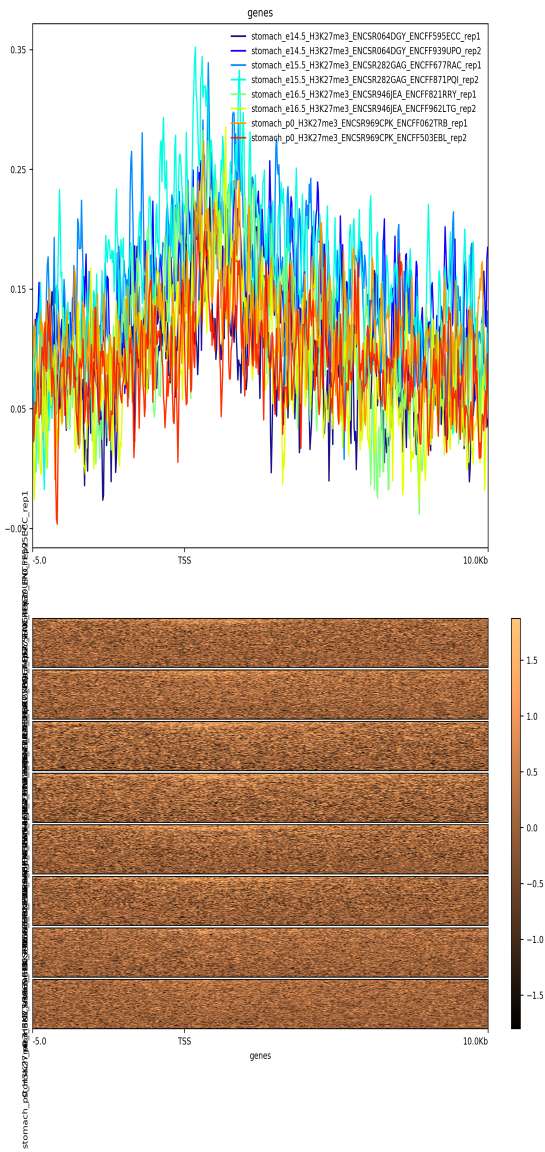
Re-repression story: liver



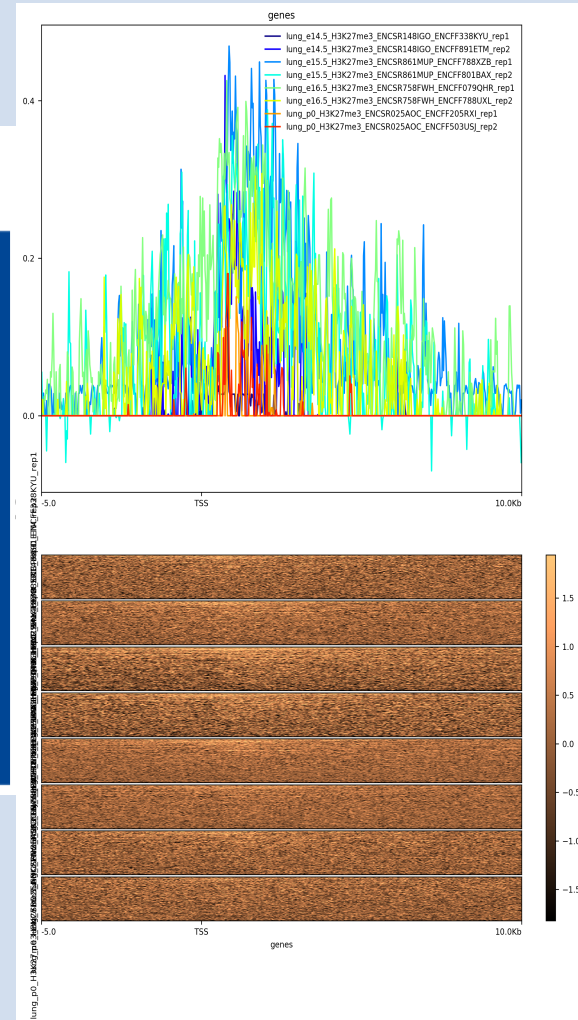
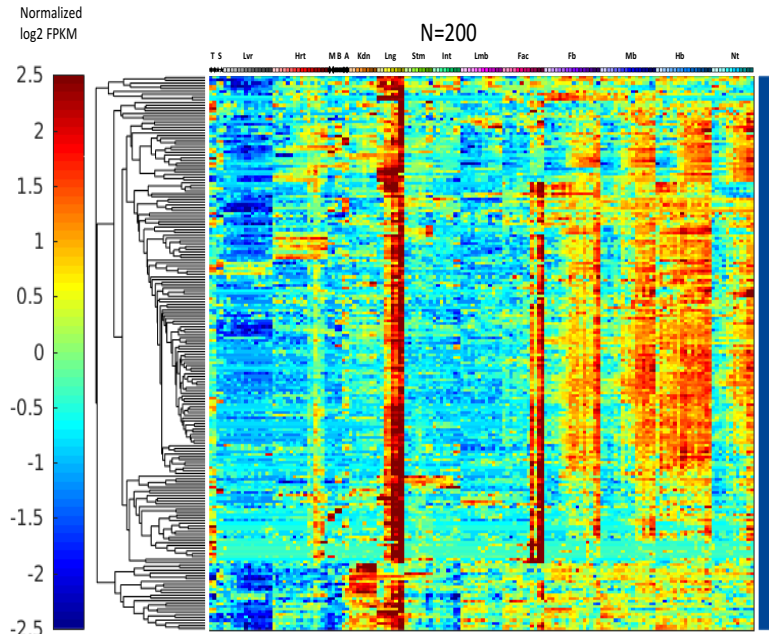
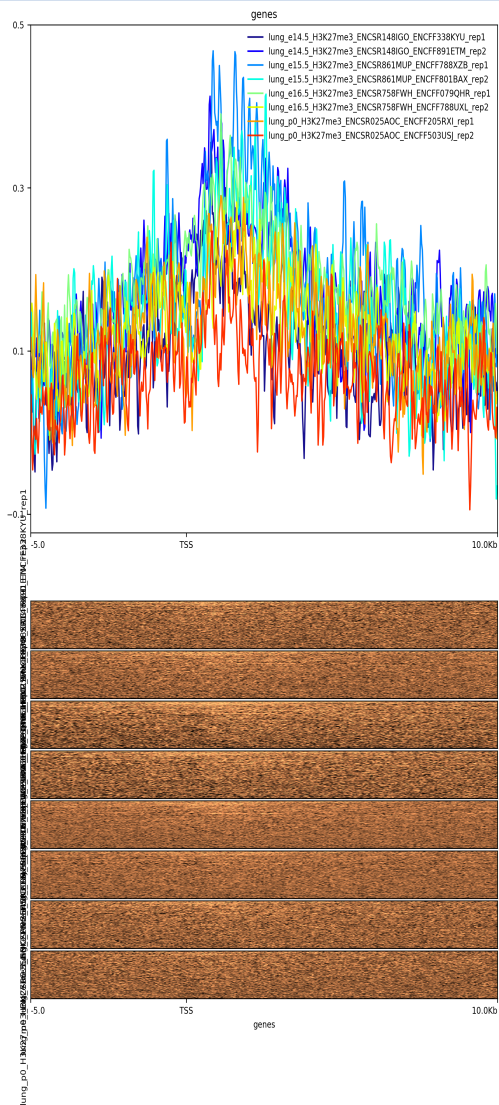
Re-repression story: intestine



Re-repression story: stomach



Re-repression story: lung



Other issues

Dissection and gender panel